

# \$750,000 - 11147 36a Avenue, Edmonton

MLS® #E4464276

**\$750,000**

4 Bedroom, 3.00 Bathroom, 1,364 sqft  
Single Family on 0.00 Acres

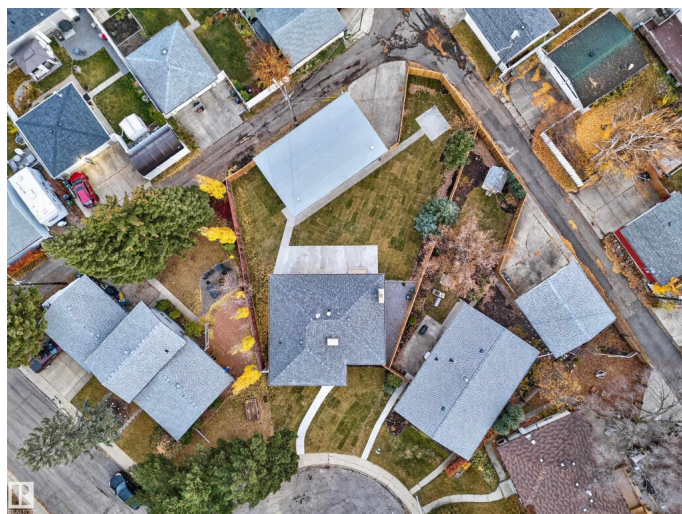
Greenfield, Edmonton, AB

A Great opportunity in Greenfield. This reimagined bungalow sits on a quiet cul-de-sac and blends modern design with timeless charm. Set on a ~9,300 sq ft lot, the 2025 renovation features new windows, interior and exterior doors, custom railings, and engineered hardwood throughout, with 24x24 tile in the entry and baths. A skylight brightens the front entry and opens to the main floor. The custom kitchen pairs quartz counters with full-height cabinetry. Three bedrooms up include a beautiful primary with a new 3-piece ensuite and walk-in closet, plus a 5-piece main bath with double vanities. The finished basement offers a large rec room, fourth bedroom, new laundry, a custom 3-piece bath, and plenty of built-in storage. Outside youâ€™ll find fresh paint, new landscaping, a large patio, stone base ready for a fire feature, and a dog kennel. Located in a mature, family-friendly community steps from schools, parks, and minutes to shopping, U of A, and downtown.

Built in 1967

## Essential Information

MLS® #	E4464276
Price	\$750,000
Bedrooms	4



Bathrooms	3.00
Full Baths	3
Square Footage	1,364
Acres	0.00
Year Built	1967
Type	Single Family
Sub-Type	Detached Single Family
Style	Bungalow
Status	Active

### Community Information

Address	11147 36a Avenue
Area	Edmonton
Subdivision	Greenfield
City	Edmonton
County	ALBERTA
Province	AB
Postal Code	T6J 0E6

### Amenities

Amenities	See Remarks
Parking Spaces	6
Parking	220 Volt Wiring, Double Garage Attached, Insulated, Over Sized

### Interior

Interior Features	ensuite bathroom
Appliances	Dishwasher-Built-In, Dryer, Garage Control, Garage Opener, Humidifier-Power(Furnace), Microwave Hood Fan, Oven-Built-In, Refrigerator, Stove-Electric, Vacuum System Attachments, Vacuum Systems, Washer, Water Softener, Garage Heater
Heating	Forced Air-1, Natural Gas
Fireplace	Yes
Fireplaces	Brick Facing
Stories	2
Has Basement	Yes
Basement	Full, Finished

### Exterior

Exterior	Wood, Stucco
----------	--------------

Exterior Features	Back Lane, Cul-De-Sac, Fenced, Flat Site, Fruit Trees/Shrubs, Golf Nearby, Landscaped, Playground Nearby, Public Transportation, Schools, Shopping Nearby
Roof	Asphalt Shingles
Construction	Wood, Stucco
Foundation	Concrete Perimeter

### **School Information**

Elementary	Greenfield Elementary
Middle	Louis St. Laurent
High	Harry Ainlay High

### **Additional Information**

Date Listed	October 31st, 2025
Days on Market	6
Zoning	Zone 16

DATA IS DEEMED RELIABLE BUT IS NOT GUARANTEED ACCURATE BY THE REALTORS® ASSOCIATION OF EDMONTON. COPYRIGHT 2025 BY THE REALTORS® ASSOCIATION OF EDMONTON. ALL RIGHTS RESERVED. Trademarks are owned or controlled by the Canadian Real Estate Association (CREA) and identify real estate professionals who are members of CREA (REALTOR®, REALTORS®) and/or the quality of services they provide (MLS®, Multiple Listing Service®)

Listing information last updated on November 6th, 2025 at 6:17am MST