

Courtesy Of John Cuglietta Of RE/MAX Excellence

\$0 - 10011 82 Avenue, Edmonton

MLS® #E4462855

\$0

0 Bedroom, 0.00 Bathroom,
Retail on 0.00 Acres

Ritchie, Edmonton, AB

A versatile, bright 2nd-floor space on Whyte Avenue. Perfect for your yoga studio, creative hub, therapy practice, or niche retail (vinyl shop, barber, photo studio, nail salon). 2 bathroom, Note: Stair access only; no elevator.

Built in 1974

Essential Information

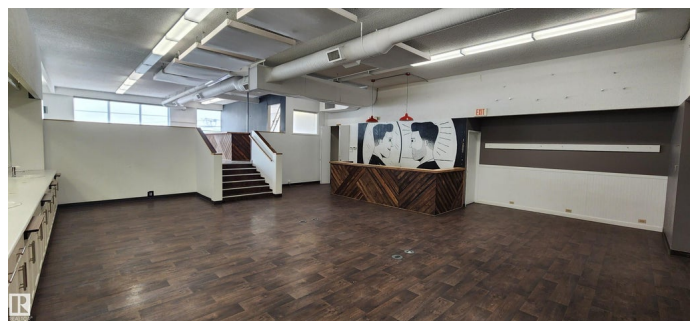
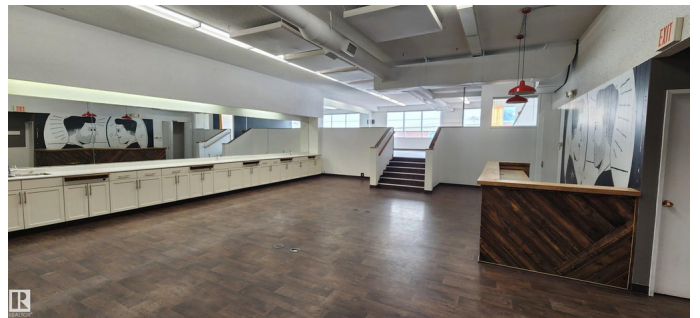
MLS® #	E4462855
Lease Rate	\$16
Bathrooms	0.00
Acres	0.00
Year Built	1974
Type	Retail
Status	Active

Community Information

Address	10011 82 Avenue
Area	Edmonton
Subdivision	Ritchie
City	Edmonton
County	ALBERTA
Province	AB
Postal Code	T6E 1Z2

Exterior

Exterior Brick, Wood Frame



Construction Brick, Wood Frame

Additional Information

Date Listed October 17th, 2025

Days on Market 10

Zoning Zone 17

DATA IS DEEMED RELIABLE BUT IS NOT GUARANTEED ACCURATE BY THE REALTORS® ASSOCIATION OF EDMONTON. COPYRIGHT 2025 BY THE REALTORS® ASSOCIATION OF EDMONTON. ALL RIGHTS RESERVED. Trademarks are owned or controlled by the Canadian Real Estate Association (CREA) and identify real estate professionals who are members of CREA (REALTOR®, REALTORS®) and/or the quality of services they provide (MLS®, Multiple Listing Service®)

Listing information last updated on October 27th, 2025 at 8:17pm MDT