

Courtesy Of Kaitlyn A Gottlieb Of Real Broker

\$515,000 - 14131 147 Avenue, Edmonton

MLS® #E4462407

\$515,000

3 Bedroom, 2.50 Bathroom, 2,026 sqft

Single Family on 0.00 Acres

Cumberland, Edmonton, AB

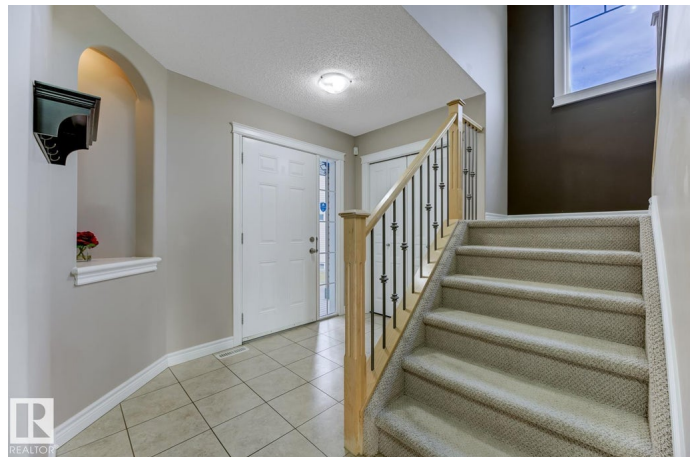
A fabulous 2-storey family home, built by Cameron Homes, perfectly situated on a quiet cul-de-sac. Inside, youâ€™ll find an inviting open-concept main floor with hardwood & tile flooring, a bright living room, cozy dining area, & a kitchen finished with granite counters & a walk-through pantry connecting to the mudroom & garage, along with a powder room. Upstairs is designed with families in mindâ€™ featuring a spacious primary suite with a 5-pce ensuite, 2 additional bedrooms, a full 4-pce bath, & a large bonus room perfect for movie nights or play space. The basement is undeveloped & ready for your personal touches, whether thatâ€™s a home gym, recreation room, or additional living space. The oversized double garage adds extra storage & room for larger vehicles. Sitting on a large pie-shaped lot, the backyard offers plenty of space for kids, pets, & entertaining, with convenient alley access ideal for RV storage. This family-oriented neighborhood offers schools, parks, rec amenities & shopping, minutes away.

Built in 2008

Essential Information

MLS® # E4462407

Price \$515,000



Bedrooms	3
Bathrooms	2.50
Full Baths	2
Half Baths	1
Square Footage	2,026
Acres	0.00
Year Built	2008
Type	Single Family
Sub-Type	Detached Single Family
Style	2 Storey
Status	Active

Community Information

Address	14131 147 Avenue
Area	Edmonton
Subdivision	Cumberland
City	Edmonton
County	ALBERTA
Province	AB
Postal Code	T6V 0A8

Amenities

Amenities	Deck
Parking Spaces	4
Parking	2 Outdoor Stalls, Double Garage Attached, Front Drive Access

Interior

Interior Features	ensuite bathroom
Appliances	Dishwasher-Built-In, Dryer, Garage Control, Garage Opener, Hood Fan, Oven-Microwave, Refrigerator, Storage Shed, Stove-Electric, Washer, Window Coverings
Heating	Forced Air-1, Natural Gas
Fireplace	Yes
Fireplaces	Mantel, Tile Surround
Stories	2
Has Basement	Yes
Basement	Full, Unfinished

Exterior

Exterior	Wood, Vinyl
Exterior Features	Cul-De-Sac, Fenced, Golf Nearby, Low Maintenance Landscape, No Back Lane, Park/Reserve, Public Swimming Pool, Public Transportation, Schools, Shopping Nearby
Roof	Asphalt Shingles
Construction	Wood, Vinyl
Foundation	Concrete Perimeter

School Information

Elementary	Hilwie Hamdon/St Vincent
Middle	Hilwie Hamdon/St Mark
High	Ross Sheppard/St Joseph

Additional Information

Date Listed	October 16th, 2025
Days on Market	3
Zoning	Zone 27

DATA IS DEEMED RELIABLE BUT IS NOT GUARANTEED ACCURATE BY THE REALTORS® ASSOCIATION OF EDMONTON. COPYRIGHT 2025 BY THE REALTORS® ASSOCIATION OF EDMONTON. ALL RIGHTS RESERVED. Trademarks are owned or controlled by the Canadian Real Estate Association (CREA) and identify real estate professionals who are members of CREA (REALTOR®, REALTORS®) and/or the quality of services they provide (MLS®, Multiple Listing Service®)

Listing information last updated on October 19th, 2025 at 3:02am MDT