

## \$369,900 - 5001 42 Avenue, Wetaskiwin

MLS® #E4460985

**\$369,900**

2 Bedroom, 3.00 Bathroom, 2,188 sqft

Single Family on 0.00 Acres

Parkdale (Wetaskiwin), Wetaskiwin, AB

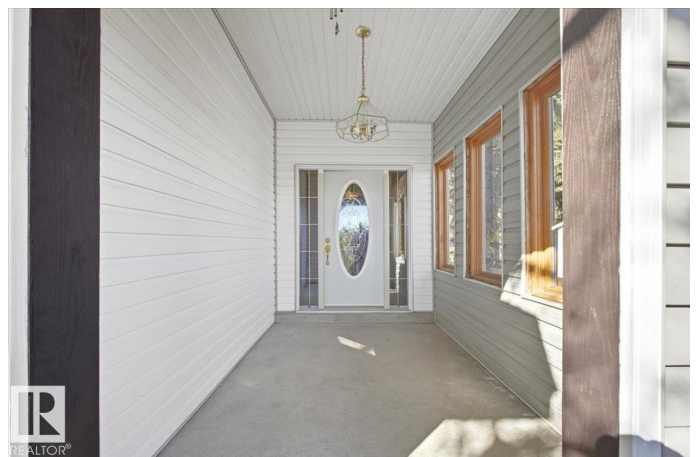
Charming 2-Storey Character Home! Step into timeless charm w/ this unique & beautifully maintained home, featuring a welcoming enclosed front porch & spacious back veranda, perfect for relaxing. Inside, you will fall in love w/ the custom kitchen (Wood Art) boasting solid oak cabinetry & mosaic tile flooring—perfect for the home chef. The formal dining room shines w/hardwood floors & a vintage chandelier, while the cozy living room includes a den/office space for added flexibility. Upstairs, discover a loft-style layout w/ 2 unique bedrooms including a spacious primary suite w/ built-in cabinetry, custom solid wood bed, 4-pc ensuite, w/i closet & private balcony. The 2nd room is bright & unique w/ octagonal ceiling & 2nd staircase to the main floor. The partially finished basement offers a workshop, laundry, 3-pc bath & loads of storage. Recent updates include a newer furnace & tankless hot water system. The landscaped, partially fenced yard offers mature trees for privacy, space for parking, and a playh

Built in 1928

### Essential Information

MLS® # E4460985

Price \$369,900



Bedrooms	2
Bathrooms	3.00
Full Baths	3
Square Footage	2,188
Acres	0.00
Year Built	1928
Type	Single Family
Sub-Type	Detached Single Family
Style	2 Storey
Status	Active

### **Community Information**

Address	5001 42 Avenue
Area	Wetaskiwin
Subdivision	Parkdale (Wetaskiwin)
City	Wetaskiwin
County	ALBERTA
Province	AB
Postal Code	T9A 0B5

### **Amenities**

Amenities	Crawl Space, Deck, Front Porch, Hot Water Tankless, Patio
Parking	RV Parking

### **Interior**

Interior Features	ensuite bathroom
Appliances	Air Conditioner-Window, Dishwasher-Built-In, Dryer, Hood Fan, Refrigerator, Stove-Electric, Washer, Window Coverings
Heating	Forced Air-1, Natural Gas
Stories	2
Has Basement	Yes
Basement	Full, Partially Finished

### **Exterior**

Exterior	Wood, Vinyl
Exterior Features	Golf Nearby, Landscaped
Roof	Asphalt Shingles, Metal
Construction	Wood, Vinyl
Foundation	Concrete Perimeter

**School Information**

Elementary	Clear Vista
Middle	Clear Vista
High	WCHS

**Additional Information**

Date Listed	October 6th, 2025
Days on Market	6
Zoning	Zone 80

DATA IS DEEMED RELIABLE BUT IS NOT GUARANTEED ACCURATE BY THE REALTORS® ASSOCIATION OF EDMONTON. COPYRIGHT 2025 BY THE REALTORS® ASSOCIATION OF EDMONTON. ALL RIGHTS RESERVED.Trademarks are owned or controlled by the Canadian Real Estate Association (CREA) and identify real estate professionals who are members of CREA (REALTOR®, REALTORS®) and/or the quality of services they provide (MLS®, Multiple Listing Service®)

Listing information last updated on October 12th, 2025 at 6:02pm MDT