

\$340,000 - Ne17-63 25-w4th, Rural Westlock County

MLS® #E4460555

\$340,000

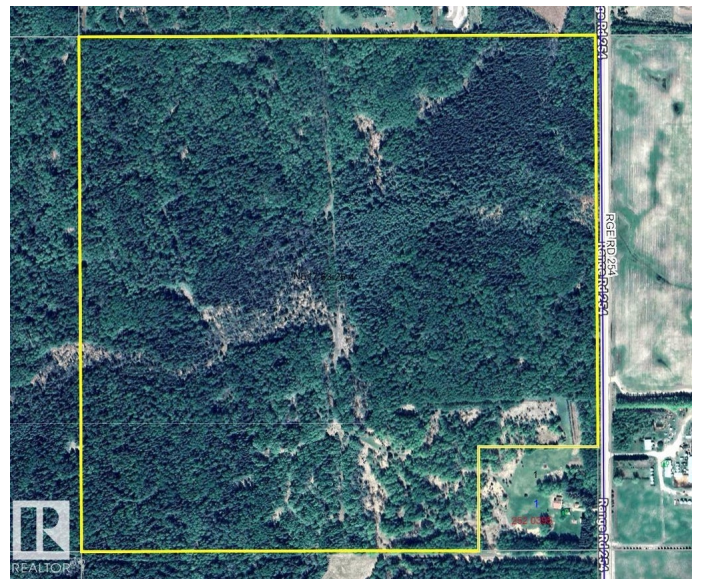
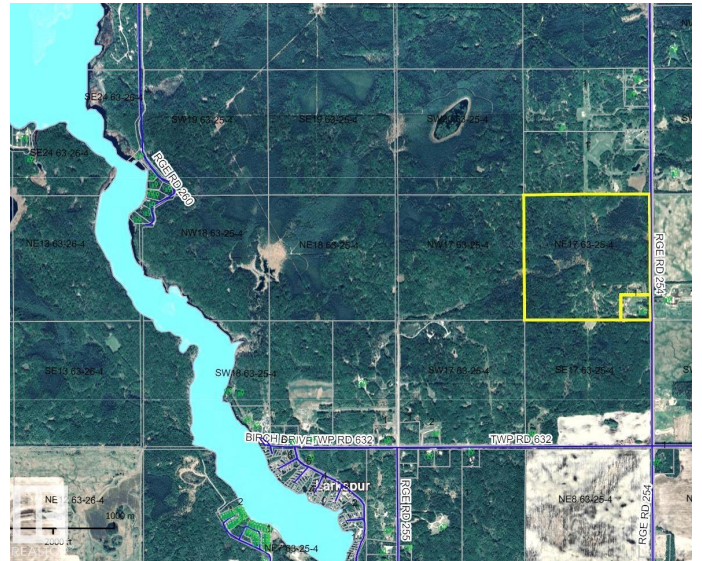
0 Bedroom, 0.00 Bathroom,
Rural on 152.59 Acres

None, Rural Westlock County, AB

Discover 152.59 acres of natural beauty located just east of the Summer Village of Larkspur and picturesque Long Island Lake. This incredible recreational property offers the perfect escape for nature lovers, outdoor enthusiasts, or those seeking a private retreat. With a mix of mature trees and rolling terrain, it's ideal for hiking, quadding, snowshoeing, or simply enjoying the peace and quiet of your own wooded paradise. The possibilities are endless—build your dream cabin, set up a seasonal campsite, or use it as a base for hunting, fishing, and year-round recreation. Conveniently accessible yet perfectly secluded, this property combines privacy, tranquility, and proximity to one of the area's most beautiful lakes. A rare opportunity to own a large, treed parcel near Long Island Lake—your perfect getaway awaits!

Essential Information

MLS® #	E4460555
Price	\$340,000
Bathrooms	0.00
Acres	152.59
Type	Rural
Sub-Type	Vacant Lot/Land
Status	Active



Community Information

Address	Ne17-63 25-w4th
Area	Rural Westlock County
Subdivision	None
City	Rural Westlock County
County	ALBERTA
Province	AB
Postal Code	T0G 0S0

Exterior

Exterior Features Recreation Use, Treed Lot

Additional Information

Date Listed	October 2nd, 2025
Days on Market	12
Zoning	Zone 70

DATA IS DEEMED RELIABLE BUT IS NOT GUARANTEED ACCURATE BY THE REALTORS® ASSOCIATION OF EDMONTON. COPYRIGHT 2025 BY THE REALTORS® ASSOCIATION OF EDMONTON. ALL RIGHTS RESERVED. Trademarks are owned or controlled by the Canadian Real Estate Association (CREA) and identify real estate professionals who are members of CREA (REALTOR®, REALTORS®) and/or the quality of services they provide (MLS®, Multiple Listing Service®)

Listing information last updated on October 14th, 2025 at 10:18am MDT