

\$389,900 - 12 600 Bellerose Drive, St. Albert

MLS® #E4458803

\$389,900

3 Bedroom, 2.50 Bathroom, 1,556 sqft

Condo / Townhouse on 0.00 Acres

Oakmont, St. Albert, AB

Welcome to the beautiful community of Oakmont! This beautifully built townhome will not disappoint. Enjoy modern finishing's throughout like 9 ft ceilings, tons of natural light with large windows, an open concept floorplan and much more! This home offers a spacious living area which flows seamlessly to your kitchen that includes stainless steel appliances, modern wood toned cabinetry, quartz countertops and a large island! A dining area, flex space and balcony complete the main floor perfectly. The upper level features, laundry, 3 bedrooms, 4pc bath, the large primary includes 4pc ensuite and walk in closet. An oversized single attached garage with wide driveway that adds space for 2 vehicles, a low maintenance landscaped and fenced backyard with deck PLUS close to all near by amenities like the Sturgeon Valley Golf Course , walking trails around the Sturgeon River and more! Making this not only the ideal home but location! Welcome home! Truly a must see to be appreciated.

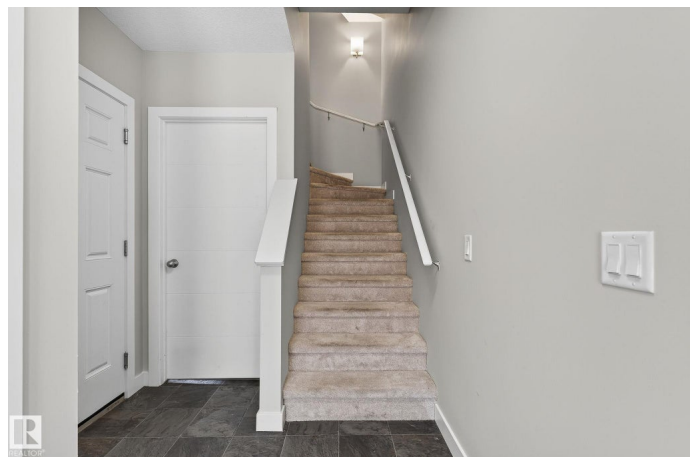
Built in 2018

Essential Information

MLS® # E4458803

Price \$389,900

Bedrooms 3



Bathrooms	2.50
Full Baths	2
Half Baths	1
Square Footage	1,556
Acres	0.00
Year Built	2018
Type	Condo / Townhouse
Sub-Type	Townhouse
Style	3 Storey
Status	Active

Community Information

Address	12 600 Bellerose Drive
Area	St. Albert
Subdivision	Oakmont
City	St. Albert
County	ALBERTA
Province	AB
Postal Code	T8N 7T5

Amenities

Amenities	Ceiling 9 ft., Deck, Detectors Smoke, Parking-Visitor, Natural Gas BBQ Hookup
Parking Spaces	3
Parking	Parking Pad Cement/Paved, Single Garage Attached

Interior

Interior Features	ensuite bathroom
Appliances	Dryer, Garage Opener, Microwave Hood Fan, Refrigerator, Stove-Electric, Washer, Window Coverings
Heating	Forced Air-1, Natural Gas
Stories	2
Has Basement	Yes
Basement	None, No Basement

Exterior

Exterior	Wood, Vinyl
Exterior Features	Fenced, Golf Nearby, Landscaped, No Through Road, Playground Nearby, Public Swimming Pool, Public Transportation, Schools,

	Shopping Nearby
Roof	Asphalt Shingles
Construction	Wood, Vinyl
Foundation	Concrete Perimeter

Additional Information

Date Listed	September 20th, 2025
Days on Market	2
Zoning	Zone 24
Condo Fee	\$285

DATA IS DEEMED RELIABLE BUT IS NOT GUARANTEED ACCURATE BY THE REALTORS® ASSOCIATION OF EDMONTON. COPYRIGHT 2025 BY THE REALTORS® ASSOCIATION OF EDMONTON. ALL RIGHTS RESERVED. Trademarks are owned or controlled by the Canadian Real Estate Association (CREA) and identify real estate professionals who are members of CREA (REALTOR®, REALTORS®) and/or the quality of services they provide (MLS®, Multiple Listing Service®)

Listing information last updated on September 22nd, 2025 at 3:47am MDT