

\$265,000 - 11 Graywood Terrace, Stony Plain

MLS® #E4458757

\$265,000

3 Bedroom, 1.50 Bathroom, 1,227 sqft

Condo / Townhouse on 0.00 Acres

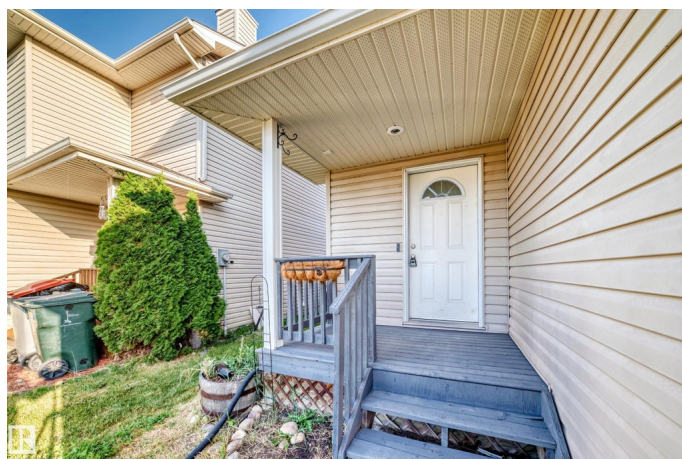
Graybriar, Stony Plain, AB

Discover this charming and affordable 3 bedroom duplex in the desirable community of Graybriar. Offering the benefits of a bare land condo with very low condo fees, this home is move-in ready with fresh paint and brand new vinyl plank flooring throughout the main floor. The spacious deck and private yard back directly onto a tranquil greenbelt, perfect for outdoor relaxation. Whether you're a first-time buyer or a investor seeking a solid revenue property, this home is an excellent opportunity!!

Built in 2006

Essential Information

MLS® #	E4458757
Price	\$265,000
Bedrooms	3
Bathrooms	1.50
Full Baths	1
Half Baths	1
Square Footage	1,227
Acres	0.00
Year Built	2006
Type	Condo / Townhouse
Sub-Type	Half Duplex
Style	2 Storey
Status	Active



Community Information

Address	11 Graywood Terrace
Area	Stony Plain
Subdivision	Graybriar
City	Stony Plain
County	ALBERTA
Province	AB
Postal Code	T7Z 0A6

Amenities

Amenities	Deck, Front Porch, See Remarks
Parking Spaces	2
Parking	Single Garage Attached

Interior

Appliances	Dishwasher-Built-In, Dryer, Hood Fan, Refrigerator, Stove-Electric, Washer
Heating	Forced Air-1, Natural Gas
Stories	2
Has Basement	Yes
Basement	Full, Unfinished

Exterior

Exterior	Wood, Vinyl
Exterior Features	See Remarks
Roof	Asphalt Shingles
Construction	Wood, Vinyl
Foundation	Concrete Perimeter

Additional Information

Date Listed	September 20th, 2025
Days on Market	2
Zoning	Zone 91
Condo Fee	\$78

DATA IS DEEMED RELIABLE BUT IS NOT GUARANTEED ACCURATE BY THE REALTORS® ASSOCIATION OF EDMONTON. COPYRIGHT 2025 BY THE REALTORS® ASSOCIATION OF EDMONTON. ALL RIGHTS RESERVED. Trademarks are owned or controlled by the Canadian Real Estate Association (CREA) and identify real estate professionals who are members of CREA (REALTOR®, REALTORS®) and/or the quality of services they provide (MLS®, Multiple Listing Service®)

Listing information last updated on September 21st, 2025 at 10:47pm MDT