

\$499,000 - 10030 86 Avenue, Edmonton

MLS® #E4457775

\$499,000

0 Bedroom, 0.00 Bathroom,
Land Commercial on 0.00 Acres

Strathcona, Edmonton, AB

Excellent Site! Zoned RM h16. Site dimensions 34.67m2 x 10.06m2. Strathcona area parcel! Very close proximity to the river valley! 7-minute drive to Downtown Edmonton. 6-minute drive to University of Alberta. Perfect infill opportunity for a builder or developer that can appreciate the Strathcona area.

Built in 1967

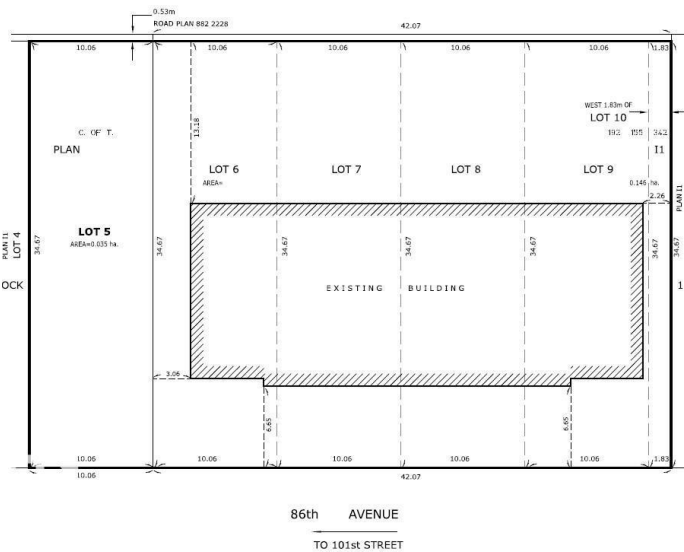
Essential Information

MLS® #	E4457775
Price	\$499,000
Bathrooms	0.00
Acres	0.00
Year Built	1967
Type	Land Commercial
Status	Active

Community Information

Address	10030 86 Avenue
Area	Edmonton
Subdivision	Strathcona
City	Edmonton
County	ALBERTA
Province	AB
Postal Code	T6E 2L9

Additional Information



Date Listed September 12th, 2025

Days on Market 3

Zoning Zone 15

DATA IS DEEMED RELIABLE BUT IS NOT GUARANTEED ACCURATE BY THE REALTORS® ASSOCIATION OF EDMONTON. COPYRIGHT 2025 BY THE REALTORS® ASSOCIATION OF EDMONTON. ALL RIGHTS RESERVED. Trademarks are owned or controlled by the Canadian Real Estate Association (CREA) and identify real estate professionals who are members of CREA (REALTOR®, REALTORS®) and/or the quality of services they provide (MLS®, Multiple Listing Service®)

Listing information last updated on September 15th, 2025 at 3:33am MDT