

\$429,900 - 657 Glenwright Crescent, Edmonton

MLS® #E4456486

\$429,900

5 Bedroom, 3.00 Bathroom, 1,235 sqft
Single Family on 0.00 Acres

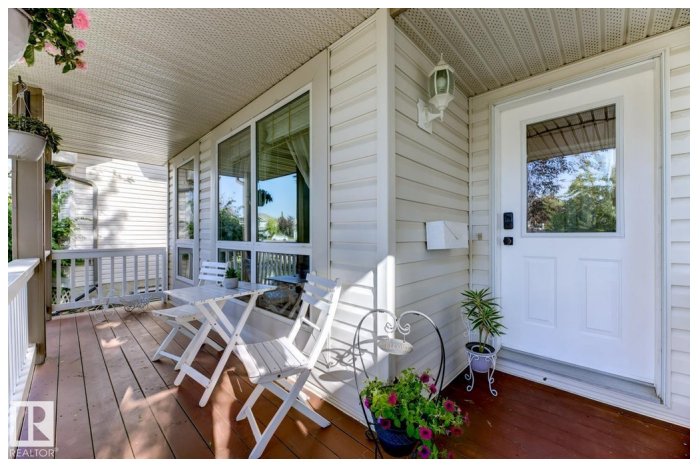
Glastonbury, Edmonton, AB

Welcome to this charming 2 storey home in the family-friendly community of Glastonbury, perfectly situated just steps from the neighborhood playground. The main floor offers a spacious layout featuring a bright eat-in kitchen complete with stainless steel appliances - plenty of room for family meals, a large living room ideal for relaxing or entertaining, and a convenient half bathroom. Upstairs youâ€™ll find three comfortable bedrooms, including the primary suite complete with a walk-in closet and private 2-piece ensuite. The fully finished basement adds exceptional living space with two additional bedrooms, a 3-piece bathroom, and room for guests, teens, or a home office. Enjoy the beautifully manicured backyard, complete with a deck for outdoor dining and a double detached garage for parking and storage. Additional highlights include central A/C and new shingles installed in 2023. This home is ideally located close to shopping, schools, and offers quick access to the Anthony Henday for an easy commute.

Built in 2000

Essential Information

MLS® #	E4456486
Price	\$429,900



Bedrooms	5
Bathrooms	3.00
Full Baths	2
Half Baths	2
Square Footage	1,235
Acres	0.00
Year Built	2000
Type	Single Family
Sub-Type	Detached Single Family
Style	2 Storey
Status	Active

Community Information

Address	657 Glenwright Crescent
Area	Edmonton
Subdivision	Glastonbury
City	Edmonton
County	ALBERTA
Province	AB
Postal Code	T5T 6K6

Amenities

Amenities	Deck, No Animal Home, No Smoking Home
Parking	Double Garage Detached

Interior

Interior Features	ensuite bathroom
Appliances	Air Conditioning-Central, Dishwasher - Energy Star, Dryer, Garage Control, Garage Opener, Hood Fan, Refrigerator, Stove-Electric, Washer, Window Coverings
Heating	Forced Air-1, Natural Gas
Stories	3
Has Basement	Yes
Basement	Full, Finished

Exterior

Exterior	Wood, Vinyl
Exterior Features	Back Lane, Fenced, Landscaped, Playground Nearby, Schools, Shopping Nearby

Roof	Asphalt Shingles
Construction	Wood, Vinyl
Foundation	Concrete Perimeter

Additional Information

Date Listed	September 5th, 2025
Days on Market	3
Zoning	Zone 58

DATA IS DEEMED RELIABLE BUT IS NOT GUARANTEED ACCURATE BY THE REALTORS® ASSOCIATION OF EDMONTON. COPYRIGHT 2025 BY THE REALTORS® ASSOCIATION OF EDMONTON. ALL RIGHTS RESERVED.Trademarks are owned or controlled by the Canadian Real Estate Association (CREA) and identify real estate professionals who are members of CREA (REALTOR®, REALTORS®) and/or the quality of services they provide (MLS®, Multiple Listing Service®)

Listing information last updated on September 8th, 2025 at 11:33am MDT