

# **\$539,900 - 188-52343 Rge Rd 211, Rural Strathcona County**

MLS® #E4455002

**\$539,900**

3 Bedroom, 2.50 Bathroom, 1,935 sqft

Rural on 0.59 Acres

Antler Lake, Rural Strathcona County, AB

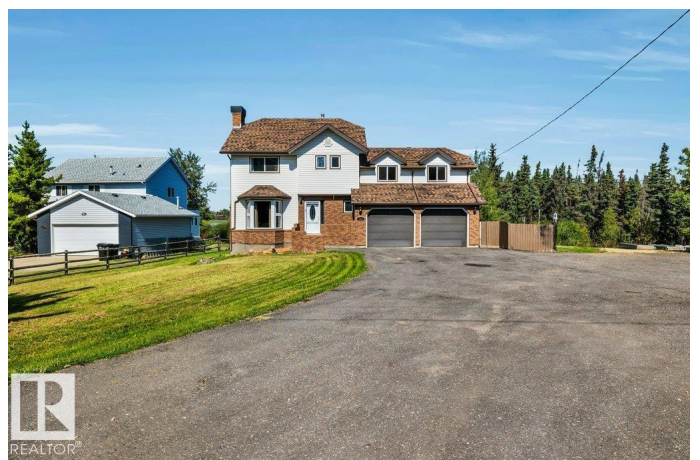
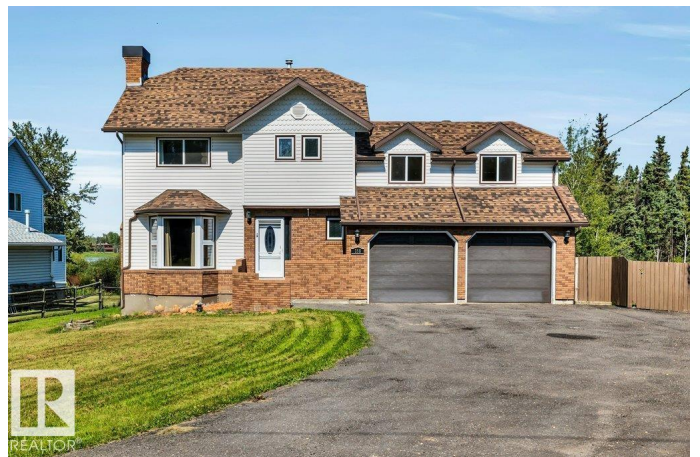
Set on a 0.6-acre lot w/ boundary fence & tranquil lake views, this 2-storey home offers a perfect blend of comfort & luxury. The living room is warm & welcoming w/ hardwood floors & gas FP; the dining area & kitchen have views of the lake, are fully tiled & donâ€™t disappoint. The kitchen gleams w/ SS appliances & granite countertops & has access to a lake-facing deck to enjoy your morning coffee. Upstairs are 3 bdrms & a spacious 4 pc bath; the primary features generous closets & a private 3 pc ensuite. Enjoy the versatile bonus room which could be used for play, family room or office. In the fully finished bsmnt, a lrg recreation space provides ample space for relaxation or entertaining; add to that laundry & storage. The 26x22 heated dble att garage ensures year-round convenience, while a 24x15 detached garage & carport accommodate hobbies & storage. Outdoor lovers will value the easy lake access, reserve land & hiking opportunities. All on municipal water & sewer! See Info Pack for all recent upgrades.

Built in 1984

## **Essential Information**

MLS® #

E4455002



Price	\$539,900
Bedrooms	3
Bathrooms	2.50
Full Baths	2
Half Baths	1
Square Footage	1,935
Acres	0.59
Year Built	1984
Type	Rural
Sub-Type	Detached Single Family
Style	2 Storey
Status	Active

### Community Information

Address	188-52343 Rge Rd 211
Area	Rural Strathcona County
Subdivision	Antler Lake
City	Rural Strathcona County
County	ALBERTA
Province	AB
Postal Code	T8G 1A5

### Amenities

Features	Deck, Fire Pit, No Smoking Home
----------	---------------------------------

### Interior

Interior Features	ensuite bathroom
Heating	Baseboard, Natural Gas
Fireplace	Yes
Stories	3
Has Basement	Yes
Basement	Full, Finished

### Exterior

Exterior	Wood
Exterior Features	Fenced, Lake View, Low Maintenance Landscape, Playground Nearby
Construction	Wood
Foundation	Concrete Perimeter

### Additional Information

Date Listed August 28th, 2025

Days on Market 1

Zoning Zone 84

DATA IS DEEMED RELIABLE BUT IS NOT GUARANTEED ACCURATE BY THE REALTORS® ASSOCIATION OF EDMONTON. COPYRIGHT 2025 BY THE REALTORS® ASSOCIATION OF EDMONTON. ALL RIGHTS RESERVED. Trademarks are owned or controlled by the Canadian Real Estate Association (CREA) and identify real estate professionals who are members of CREA (REALTOR®, REALTORS®) and/or the quality of services they provide (MLS®, Multiple Listing Service®)

Listing information last updated on August 29th, 2025 at 1:17am MDT