

\$749,900 - 4322 Hawthorn Landing Landing, Edmonton

MLS® #E4454870

\$749,900

5 Bedroom, 3.50 Bathroom, 2,196 sqft

Single Family on 0.00 Acres

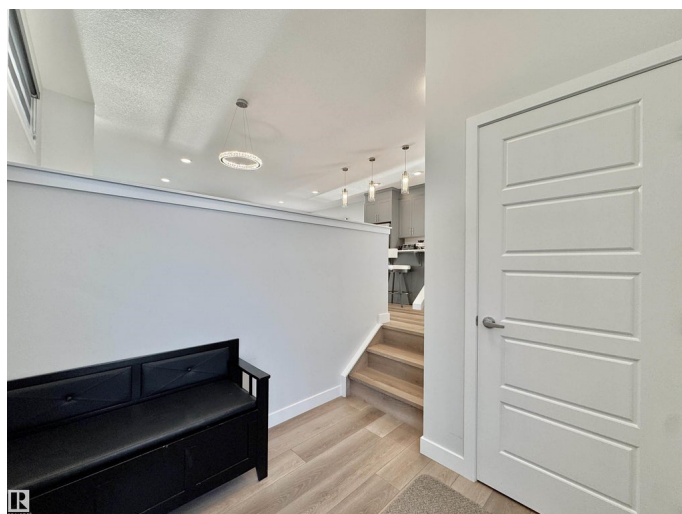
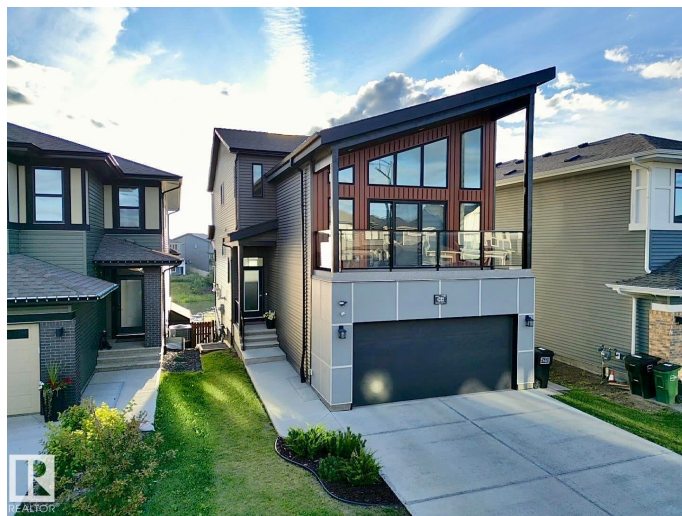
The Orchards At Ellerslie, Edmonton, AB

Must-see fully upgraded Brookfield Hudson model in show-home condition. This 2-storey home features 2,195 square feet, central air, and a fully finished walk-out basement. The sunlit main floor features a spacious open-concept great room, chef-style kitchen with upgraded cabinetry, electric fireplace, stainless steel appliances and a generous pantry. Upstairs offers a vaulted bonus room, 4 generous bedrooms, a full bath and laundry room. The luxurious primary boasts a spa-like ensuite with soaker tub, stand-up shower, his-and-hers sinks, and a walk-in closet. The glass-railed covered deck and lower patio overlook a scenic walking trail with a pond view, west facing yard with firepit, raised garden beds with wood storage, hot tub, and a garden shed for storage. This quiet location is minutes from schools, walking trails, the Orchards Residents Association, and easy access to the Anthony Henday.

Built in 2021

Essential Information

| | |
|------------|-----------|
| MLS® # | E4454870 |
| Price | \$749,900 |
| Bedrooms | 5 |
| Bathrooms | 3.50 |
| Full Baths | 3 |



| | |
|----------------|------------------------|
| Half Baths | 1 |
| Square Footage | 2,196 |
| Acres | 0.00 |
| Year Built | 2021 |
| Type | Single Family |
| Sub-Type | Detached Single Family |
| Style | 4 Level Split |
| Status | Active |

Community Information

| | |
|-------------|-------------------------------|
| Address | 4322 Hawthorn Landing Landing |
| Area | Edmonton |
| Subdivision | The Orchards At Ellerslie |
| City | Edmonton |
| County | ALBERTA |
| Province | AB |
| Postal Code | T6X 2Y9 |

Amenities

| | |
|---------------|--|
| Amenities | Air Conditioner, Ceiling 9 ft., Closet Organizers, Deck, Fire Pit, Hot Tub, No Smoking Home, Parking-Extra, Patio, Vaulted Ceiling, Walkout Basement |
| Parking | Double Garage Attached |
| Is Waterfront | Yes |

Interior

| | |
|-------------------|--|
| Interior Features | ensuite bathroom |
| Appliances | Dishwasher-Built-In, Dryer, Hood Fan, Refrigerator, Stove-Electric, Vacuum Systems, Washer, Window Coverings |
| Heating | Forced Air-1, Natural Gas |
| Fireplace | Yes |
| Fireplaces | Heatilator/Fan, Mantel |
| Stories | 4 |
| Has Basement | Yes |
| Basement | Full, Finished |

Exterior

| | |
|-------------------|---|
| Exterior | Wood, Hardie Board Siding |
| Exterior Features | Backs Onto Lake, Fenced, Low Maintenance Landscape, No Back Lane, |

Playground Nearby, Public Swimming Pool, Public Transportation, Schools

| | |
|--------------|---------------------------|
| Roof | Asphalt Shingles |
| Construction | Wood, Hardie Board Siding |
| Foundation | Concrete Perimeter |

Additional Information

| | |
|----------------|-------------------|
| Date Listed | August 27th, 2025 |
| Days on Market | 1 |
| Zoning | Zone 53 |
| HOA Fees | 425 |
| HOA Fees Freq. | Annually |

DATA IS DEEMED RELIABLE BUT IS NOT GUARANTEED ACCURATE BY THE REALTORS® ASSOCIATION OF EDMONTON. COPYRIGHT 2025 BY THE REALTORS® ASSOCIATION OF EDMONTON. ALL RIGHTS RESERVED. Trademarks are owned or controlled by the Canadian Real Estate Association (CREA) and identify real estate professionals who are members of CREA (REALTOR®, REALTORS®) and/or the quality of services they provide (MLS®, Multiple Listing Service®)

Listing information last updated on August 28th, 2025 at 12:47am MDT