

\$375,000 - 3 Hartwick Court, Spruce Grove

MLS® #E4453111

\$375,000

3 Bedroom, 3.50 Bathroom, 1,439 sqft

Single Family on 0.00 Acres

Harvest Ridge, Spruce Grove, AB

This gorgeous two-story half-duplex welcomes you with a nice spacious entrance. The bright, open kitchen features a center island with breakfast seating, BRAND NEW APPLIANCES and flows seamlessly into the dining area that easily accommodates a large table. Garden doors lead to a private deck and backyard, perfect for entertaining. The family room is ideal for gatherings and includes a cozy corner gas fireplace. Upstairs, youâ€™™ll find two generous bedrooms, each with their own ensuite. The primary suite is impressive, boasting a sitting area, walk-in closet, and a four-piece ensuite. The second suite offers a walk-in closet and a three-piece ensuite, while a convenient laundry completes the upper level. The partially finished basement provides a third bedroom and a three-piece bathroom, adding extra living space. Enjoy the beautifully landscaped yard and large deck, perfect for outdoor entertaining. Additional features include NEW CENTRAL A/C and an attached garage. Move in and Enjoy!

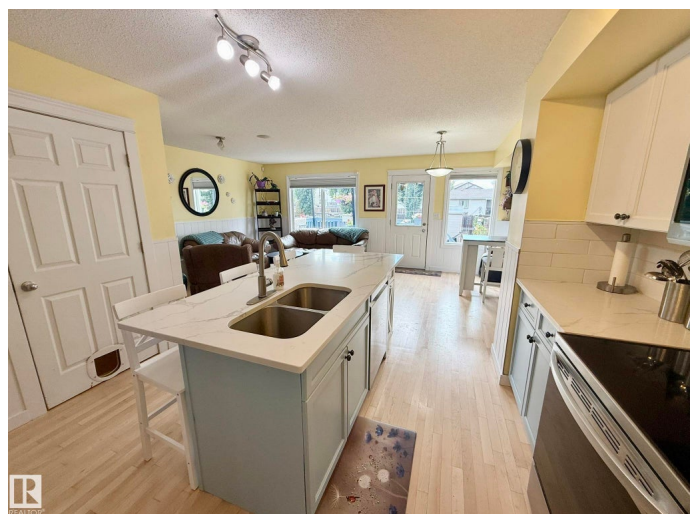
Built in 2010

Essential Information

MLS® # E4453111

Price \$375,000

Bedrooms 3



Bathrooms	3.50
Full Baths	3
Half Baths	1
Square Footage	1,439
Acres	0.00
Year Built	2010
Type	Single Family
Sub-Type	Half Duplex
Style	2 Storey
Status	Active

Community Information

Address	3 Hartwick Court
Area	Spruce Grove
Subdivision	Harvest Ridge
City	Spruce Grove
County	ALBERTA
Province	AB
Postal Code	T7X 0K2

Amenities

Amenities	Air Conditioner, Deck, No Smoking Home, HRV System
Parking	Single Garage Attached

Interior

Interior Features	ensuite bathroom
Appliances	Air Conditioning-Central, Dishwasher-Built-In, Dryer, Microwave Hood Fan, Refrigerator, Stove-Electric, Washer, Window Coverings
Heating	Forced Air-1, Natural Gas
Stories	2
Has Basement	Yes
Basement	Full, Partially Finished

Exterior

Exterior	Wood, Stone, Vinyl
Exterior Features	Fenced, Fruit Trees/Shrubs, Golf Nearby, Landscaped, Low Maintenance Landscape, Playground Nearby, Public Swimming Pool, Public Transportation, Schools, Shopping Nearby
Roof	Asphalt Shingles

Construction	Wood, Stone, Vinyl
Foundation	Concrete Perimeter

School Information

Elementary	Copperhaven School K-9
Middle	Copperhaven School K-9
High	Spruce Grove Composite

Additional Information

Date Listed	August 15th, 2025
Days on Market	7
Zoning	Zone 91

DATA IS DEEMED RELIABLE BUT IS NOT GUARANTEED ACCURATE BY THE REALTORS® ASSOCIATION OF EDMONTON. COPYRIGHT 2025 BY THE REALTORS® ASSOCIATION OF EDMONTON. ALL RIGHTS RESERVED.Trademarks are owned or controlled by the Canadian Real Estate Association (CREA) and identify real estate professionals who are members of CREA (REALTOR®, REALTORS®) and/or the quality of services they provide (MLS®, Multiple Listing Service®)

Listing information last updated on August 22nd, 2025 at 2:32pm MDT