

# \$0 - 10133 82 Avenue, Edmonton

MLS® #E4450565

**\$0**

0 Bedroom, 0.00 Bathroom,  
Retail on 0.00 Acres

Strathcona, Edmonton, AB

Prime Retail/Office Space for Lease – Whyte Avenue Unlock the potential of your business with 1372 sq. ft. of premium retail or office space located on vibrant Whyte Avenue. This high-visibility location offers excellent foot traffic and exposure. Additional Space Available: Adjacent units of 1255 sq. ft. and 2177 sq. ft. are also available and can easily be combined to meet larger space requirements. Recently Renovated: The building has undergone modern renovations, offering a clean, updated environment for your customers and team. Ideal for retail shops, professional offices, or boutique services. Flexible leasing options available.

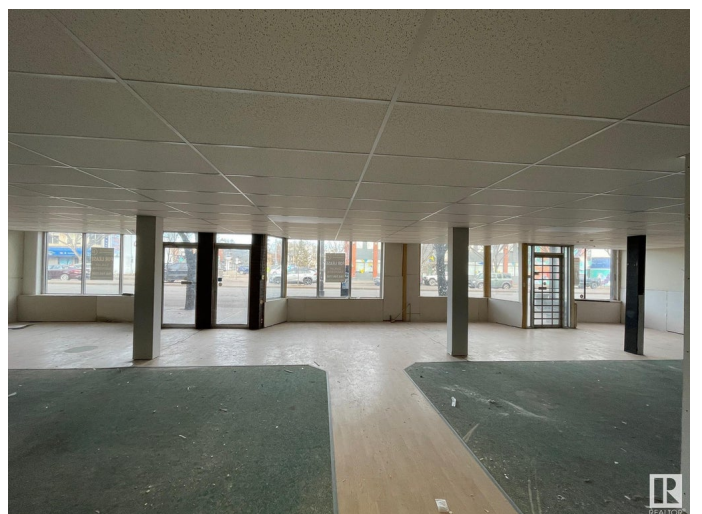
Built in 1920

## Essential Information

MLS® #	E4450565
Lease Rate	\$20
Bathrooms	0.00
Acres	0.00
Year Built	1920
Type	Retail
Status	Active

## Community Information

Address 10133 82 Avenue



Area	Edmonton
Subdivision	Strathcona
City	Edmonton
County	ALBERTA
Province	AB
Postal Code	T6E 1Z5

### **Exterior**

Exterior	Mixed
Construction	Mixed

### **Additional Information**

Date Listed	July 31st, 2025
Days on Market	62
Zoning	Zone 15

DATA IS DEEMED RELIABLE BUT IS NOT GUARANTEED ACCURATE BY THE REALTORS® ASSOCIATION OF EDMONTON. COPYRIGHT 2025 BY THE REALTORS® ASSOCIATION OF EDMONTON. ALL RIGHTS RESERVED. Trademarks are owned or controlled by the Canadian Real Estate Association (CREA) and identify real estate professionals who are members of CREA (REALTOR®, REALTORS®) and/or the quality of services they provide (MLS®, Multiple Listing Service®)

Listing information last updated on October 1st, 2025 at 3:17am MDT