

Courtesy Of Brandon J Berlando Of Exp Realty

\$799,000 - 129 27019 Twp Road 514, Rural Parkland County

MLS® #E4449824

\$799,000

5 Bedroom, 3.00 Bathroom, 2,028 sqft

Rural on 3.29 Acres

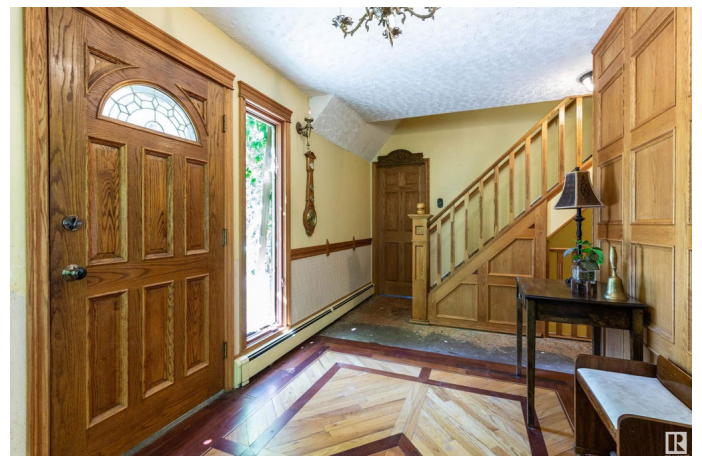
Meadow Crest Estates, Rural Parkland County, AB

Welcome to your own private paradise in the sought-after community of Meadow Crest Estates! Nestled on 3.29 acres of thick, mature trees and forest, this secluded 5-bedroom, 3-bathroom home offers the perfect balance of peaceful country living and convenient city access – just 12 minutes from Devon, Spruce Grove, or West Edmonton. A private driveway leads you to a warm and welcoming entrance, where custom oak trim and fine woodwork set the tone for the craftsmanship throughout. Inside, you'll find a spacious and inviting layout featuring hardwood floors, a large living room, expansive dining area, and a chef-friendly kitchen with plenty of room for family gatherings. Outdoors, enjoy a huge garden area, room to roam for kids and pets, and ample space for hobbies or work in the large workshop and storage building. Whether you're relaxing in nature, entertaining guests, or just enjoying quiet evenings under the stars, this property offers the utmost privacy and freedom.

Built in 1977

Essential Information

MLS® # E4449824



Price	\$799,000
Bedrooms	5
Bathrooms	3.00
Full Baths	3
Square Footage	2,028
Acres	3.29
Year Built	1977
Type	Rural
Sub-Type	Detached Single Family
Style	2 Storey
Status	Active

Community Information

Address	129 27019 Twp Road 514
Area	Rural Parkland County
Subdivision	Meadow Crest Estates
City	Rural Parkland County
County	ALBERTA
Province	AB
Postal Code	T7Y 1G6

Amenities

Features	Off Street Parking, Deck, Detectors Smoke, Fire Pit, No Smoking Home, Parking-Extra, Storage-In-Suite, Vaulted Ceiling, Workshop
Parking Spaces	10

Interior

Heating	Baseboard, Hot Water, Natural Gas, Water
Stories	3
Has Basement	Yes
Basement	Full, Finished

Exterior

Exterior	Wood
Exterior Features	Airport Nearby, Backs Onto Park/Trees, Creek, Fruit Trees/Shrubs, Golf Nearby, Landscaped, Low Maintenance Landscape, Picnic Area, Playground Nearby, Ravine View, Rolling Land, Schools, Treed Lot
Construction	Wood
Foundation	Concrete Perimeter

Additional Information

Date Listed July 25th, 2025
Days on Market 7
Zoning Zone 90

DATA IS DEEMED RELIABLE BUT IS NOT GUARANTEED ACCURATE BY THE REALTORS® ASSOCIATION OF EDMONTON. COPYRIGHT 2025 BY THE REALTORS® ASSOCIATION OF EDMONTON. ALL RIGHTS RESERVED.Trademarks are owned or controlled by the Canadian Real Estate Association (CREA) and identify real estate professionals who are members of CREA (REALTOR®, REALTORS®) and/or the quality of services they provide (MLS®, Multiple Listing Service®)
Listing information last updated on August 1st, 2025 at 12:33pm MDT