

\$449,944 - 4713 160 Avenue, Edmonton

MLS® #E4449279

\$449,944

3 Bedroom, 3.50 Bathroom, 1,445 sqft

Single Family on 0.00 Acres

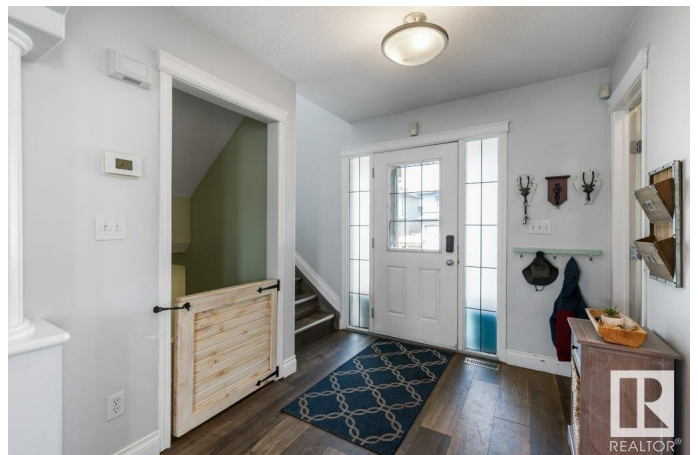
Brintnell, Edmonton, AB

BEAUTIFUL BRINTNELL! This 3 Bedroom, 4 Bath Home with over 2,000 sq ft of living space includes a **FINISHED BASEMENT**. The Main Floor Kitchen features a **PANTRY & STAINLESS STEEL APPLIANCES** (6 years old). Upstairs there are 3 ample sized Bedrooms including a Primary Bedroom w/ Walk-In Closet & Ensuite. The Basement contains Laundry, a full Bath & Rec Room (crafts, media room, fitness or 4th Bedroom). South facing Backyard leads to a **BRIGHT & SUNNY HOME** all year round. The Yard is fully fenced w/ a Deck, fruit trees (apple & plum) & a garden bed. **DOUBLE DETACHED GARAGE** (19'1" x 19'9"). Bonus: **CARPET-FREE & NEW HOT WATER TANK**. Only a 15 mins drive to CFB / Edmonton Garrison. Easy commute to downtown via car or transit. Family friendly neighbourhood has many amenities (groceries, banking, restaurants, Manning Crossing, Costco), schools, spray park & soccer fields.

Built in 2007

Essential Information

| | |
|-----------|-----------|
| MLS® # | E4449279 |
| Price | \$449,944 |
| Bedrooms | 3 |
| Bathrooms | 3.50 |



| | |
|----------------|------------------------|
| Full Baths | 3 |
| Half Baths | 1 |
| Square Footage | 1,445 |
| Acres | 0.00 |
| Year Built | 2007 |
| Type | Single Family |
| Sub-Type | Detached Single Family |
| Style | 2 Storey |
| Status | Active |

Community Information

| | |
|-------------|-----------------|
| Address | 4713 160 Avenue |
| Area | Edmonton |
| Subdivision | Brintnell |
| City | Edmonton |
| County | ALBERTA |
| Province | AB |
| Postal Code | T5Y 3M1 |

Amenities

| | |
|-----------|------------------------------------|
| Amenities | Deck, Front Porch, No Smoking Home |
| Parking | Double Garage Detached |

Interior

| | |
|-------------------|--|
| Interior Features | ensuite bathroom |
| Appliances | Dishwasher-Built-In, Dryer, Microwave Hood Fan, Refrigerator, Stove-Electric, Washer, Window Coverings |
| Heating | Forced Air-1, Natural Gas |
| Stories | 2 |
| Has Basement | Yes |
| Basement | Full, Finished |

Exterior

| | |
|-------------------|--|
| Exterior | Concrete, Vinyl |
| Exterior Features | Back Lane, Fenced, Landscaped, Public Transportation, Schools, Shopping Nearby |
| Roof | Asphalt Shingles |
| Construction | Concrete, Vinyl |
| Foundation | Concrete Perimeter |

School Information

| | |
|------------|----------------------------|
| Elementary | Delwood/St Dominic |
| Middle | Balwin/JJ Bowlen |
| High | ME Lazerte/Archbish OLeary |

Additional Information

| | |
|----------------|-----------------|
| Date Listed | July 23rd, 2025 |
| Days on Market | 3 |
| Zoning | Zone 03 |

DATA IS DEEMED RELIABLE BUT IS NOT GUARANTEED ACCURATE BY THE REALTORS® ASSOCIATION OF EDMONTON. COPYRIGHT 2025 BY THE REALTORS® ASSOCIATION OF EDMONTON. ALL RIGHTS RESERVED.Trademarks are owned or controlled by the Canadian Real Estate Association (CREA) and identify real estate professionals who are members of CREA (REALTOR®, REALTORS®) and/or the quality of services they provide (MLS®, Multiple Listing Service®)

Listing information last updated on July 26th, 2025 at 3:02pm MDT