

\$210,900 - 10642 Beaumaris Road, Edmonton

MLS® #E4447628

\$210,900

3 Bedroom, 2.00 Bathroom, 797 sqft

Condo / Townhouse on 0.00 Acres

Lorelei, Edmonton, AB

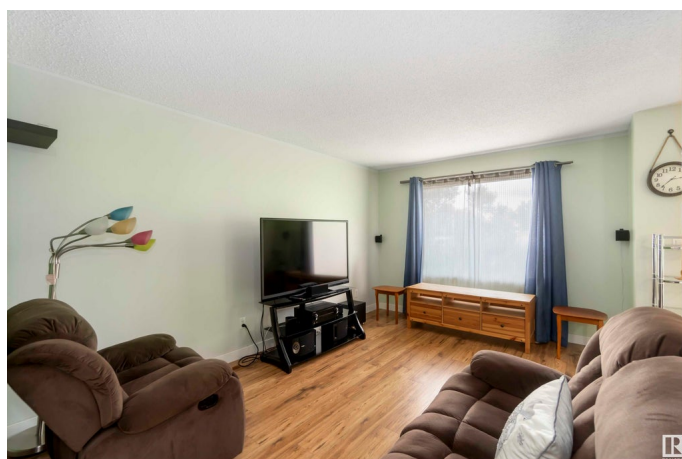
Looking for your first home? This charming 3-bedroom, 2-baths bungalow-style corner unit is Beaumaris Square offers the perfect blend of comfort and location. Featuring new laminate flooring, updated windows, a cozy patio, finished basement, and assigned parking, it checks all the boxes. Enjoy quiet, family-friendly community just across from Beaumaris Lake, next to a school, playground, and open field - ideal for strolling and spending your day outdoors. Don't miss this opportunity to own in a great location!

Built in 1977

Essential Information

MLS® #	E4447628
Price	\$210,900
Bedrooms	3
Bathrooms	2.00
Full Baths	2
Square Footage	797
Acres	0.00
Year Built	1977
Type	Condo / Townhouse
Sub-Type	Townhouse
Style	Bungalow
Status	Active

Community Information



Address	10642 Beaumaris Road
Area	Edmonton
Subdivision	Lorelei
City	Edmonton
County	ALBERTA
Province	AB
Postal Code	T5X 3N4

Amenities

Amenities	Detectors Smoke, Hot Water Natural Gas, Parking-Visitor, Vinyl Windows
Parking	Stall

Interior

Appliances	Dishwasher-Built-In, Dryer, Freezer, Hood Fan, Refrigerator, Stove-Electric
Heating	Forced Air-1, Natural Gas
Stories	2
Has Basement	Yes
Basement	Full, Finished

Exterior

Exterior	Wood
Exterior Features	Corner Lot, Flat Site, Landscaped, Playground Nearby, Public Transportation
Roof	Asphalt Shingles
Construction	Wood
Foundation	Concrete Perimeter

Additional Information

Date Listed	July 14th, 2025
Zoning	Zone 27
Condo Fee	\$370

DATA IS DEEMED RELIABLE BUT IS NOT GUARANTEED ACCURATE BY THE REALTORS® ASSOCIATION OF EDMONTON. COPYRIGHT 2025 BY THE REALTORS® ASSOCIATION OF EDMONTON. ALL RIGHTS RESERVED. Trademarks are owned or controlled by the Canadian Real Estate Association (CREA) and identify real estate professionals who are members of CREA (REALTOR®, REALTORS®) and/or the quality of services they provide (MLS®, Multiple Listing Service®)

Listing information last updated on July 14th, 2025 at 9:17pm MDT