

\$3,700,000 - 9523 103 Avenue, Edmonton

MLS® #E4447561

\$3,700,000

0 Bedroom, 0.00 Bathroom,
Land Commercial on 0.00 Acres

Boyle Street, Edmonton, AB

An exceptional +-0.92-acre (40,353.9 sq ft), full city block awaits your vision! This rare offering includes 10 adjacent lots at: 9522, 9524, 9528, 9530, 9534, 9536, 9542, 9544, 9523-103 Ave and 9548-102A Ave. Ideally located along a pedestrian-oriented corridor, this site is perfect for mixed-use development. Enjoy excellent connectivity with Edmonton's River Valley (Louise McKinney Park) and the future Quarters LRT stop (Valley Line) just a walk away. The property also fronts the Downtown Bike Network, a plus for active commuters. Such an opportunity in downtown Edmonton is truly rare!

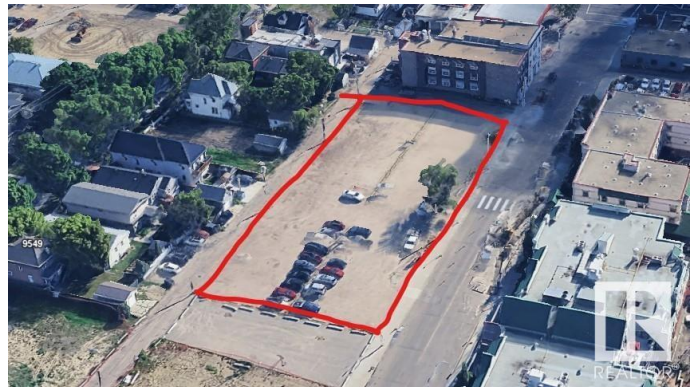
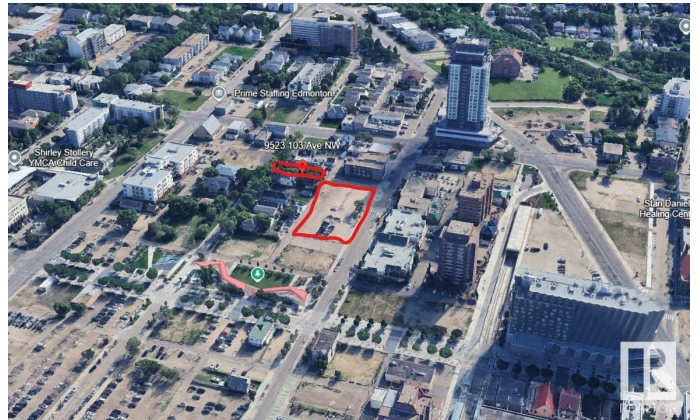
Built in 2025

Essential Information

MLS® #	E4447561
Price	\$3,700,000
Bathrooms	0.00
Acres	0.00
Year Built	2025
Type	Land Commercial
Status	Active

Community Information

Address	9523 103 Avenue
Area	Edmonton



Subdivision	Boyle Street
City	Edmonton
County	ALBERTA
Province	AB
Postal Code	T5H 0G8

Exterior

Exterior	See Remarks
Construction	See Remarks

Additional Information

Date Listed	July 13th, 2025
Days on Market	2
Zoning	Zone 13

DATA IS DEEMED RELIABLE BUT IS NOT GUARANTEED ACCURATE BY THE REALTORS® ASSOCIATION OF EDMONTON. COPYRIGHT 2025 BY THE REALTORS® ASSOCIATION OF EDMONTON. ALL RIGHTS RESERVED. Trademarks are owned or controlled by the Canadian Real Estate Association (CREA) and identify real estate professionals who are members of CREA (REALTOR®, REALTORS®) and/or the quality of services they provide (MLS®, Multiple Listing Service®)

Listing information last updated on July 14th, 2025 at 9:47pm MDT