

\$175,000 - N/A, Sherwood Park

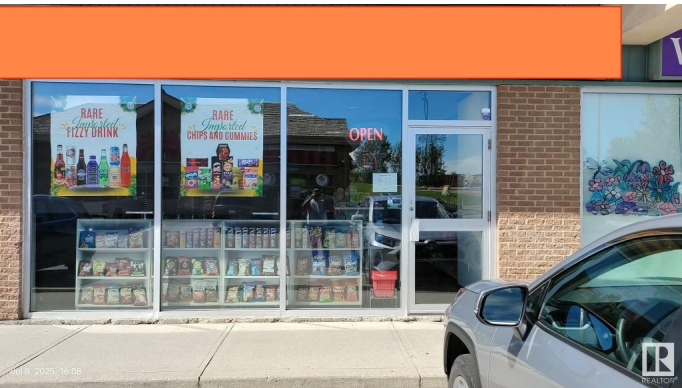
MLS® #E4446835

\$175,000

0 Bedroom, 0.00 Bathroom,
Business on 0.00 Acres

Wye Commercial, Sherwood Park, AB

Welcome to a well-established candy and pop shop nestled in the heart of Sherwood Park â€” surrounded by schools, daycares, and vibrant community amenities. This charming confectionery is known for its authentic imported treats, carefully curated gift options, and a loyal customer base. With a strong reputation in few month of operations, as a go-to destination for unique sweets and gifts, this business offers a rare and accessible ownership opportunity. Ideal for first-time buyers or entrepreneurs looking to own a passion-driven retail space. To proceed and share the confidential business details, a Non-Disclosure Agreement (NDA) must be signed. Find the NDA form in the Document attached.



Essential Information

MLS® #	E4446835
Price	\$175,000
Bathrooms	0.00
Acres	0.00
Type	Business
Status	Active

Community Information

Address	N/A
Area	Sherwood Park

Subdivision	Wye Commercial
City	Sherwood Park
County	ALBERTA
Province	AB
Postal Code	T8A 6G3

Additional Information

Date Listed	July 8th, 2025
Days on Market	3
Zoning	Zone 25

DATA IS DEEMED RELIABLE BUT IS NOT GUARANTEED ACCURATE BY THE REALTORS® ASSOCIATION OF EDMONTON. COPYRIGHT 2025 BY THE REALTORS® ASSOCIATION OF EDMONTON. ALL RIGHTS RESERVED. Trademarks are owned or controlled by the Canadian Real Estate Association (CREA) and identify real estate professionals who are members of CREA (REALTOR®, REALTORS®) and/or the quality of services they provide (MLS®, Multiple Listing Service®)

Listing information last updated on July 11th, 2025 at 11:33am MDT