

\$169,900 - 406 14808 125 Street, Edmonton

MLS® #E4445226

\$169,900

1 Bedroom, 1.00 Bathroom, 701 sqft

Condo / Townhouse on 0.00 Acres

Baranow, Edmonton, AB

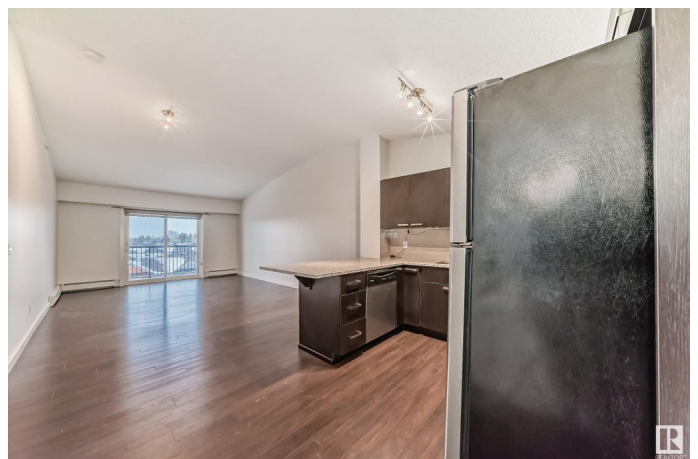
TOP FLOOR Gem with VAULTED CEILINGS at Pacific Rise on 125th! This bright and spacious 1-bedroom unit offers an airy feel with soaring vaulted ceilings and stylish laminate flooring throughout. The open-concept layout includes a modern kitchen featuring 1-1/4" granite countertops, a convenient breakfast bar, espresso-hued custom cabinetry with soft-close doors and drawers, and sleek stainless steel appliances. The generously sized primary bedroom is complemented by a 4-piece bathroom with granite counters and in-suite laundry for added convenience. You'll also appreciate the large in-suite storage closet, providing plenty of space to keep things organized. Start your mornings with a workout in the building's fitness room, then relax with your coffee on the sunny, east-facing patio. Located in a well-maintained, established building within a vibrant and growing community, you're just minutes from shopping, restaurants, public transit, and new developments. Pet-friendly and condo fees include HEAT and WATER

Built in 2014

Essential Information

MLS® # E4445226

Price \$169,900



Bedrooms	1
Bathrooms	1.00
Full Baths	1
Square Footage	701
Acres	0.00
Year Built	2014
Type	Condo / Townhouse
Sub-Type	Lowrise Apartment
Style	Single Level Apartment
Status	Active

Community Information

Address	406 14808 125 Street
Area	Edmonton
Subdivision	Baranow
City	Edmonton
County	ALBERTA
Province	AB
Postal Code	T5X 0G1

Amenities

Amenities	Exercise Room, Vaulted Ceiling, Vinyl Windows
Parking Spaces	1
Parking	Stall

Interior

Appliances	Dishwasher-Built-In, Fan-Ceiling, Microwave Hood Fan, Refrigerator, Stacked Washer/Dryer, Stove-Electric
Heating	Baseboard, Hot Water, See Remarks
# of Stories	4
Stories	1
Has Basement	Yes
Basement	None, No Basement

Exterior

Exterior	Wood, Stone, Vinyl
Exterior Features	Low Maintenance Landscape, Park/Reserve, Playground Nearby, Public Transportation, Schools, Shopping Nearby
Roof	Asphalt Shingles

Construction	Wood, Stone, Vinyl
Foundation	Concrete Perimeter

Additional Information

Date Listed	July 1st, 2025
Days on Market	17
Zoning	Zone 27
Condo Fee	\$336

DATA IS DEEMED RELIABLE BUT IS NOT GUARANTEED ACCURATE BY THE REALTORS® ASSOCIATION OF EDMONTON. COPYRIGHT 2025 BY THE REALTORS® ASSOCIATION OF EDMONTON. ALL RIGHTS RESERVED.Trademarks are owned or controlled by the Canadian Real Estate Association (CREA) and identify real estate professionals who are members of CREA (REALTOR®, REALTORS®) and/or the quality of services they provide (MLS®, Multiple Listing Service®)

Listing information last updated on July 18th, 2025 at 5:47am MDT