

\$134,900 - 104 44 Alpine Place, St. Albert

MLS® #E4444760

\$134,900

2 Bedroom, 1.00 Bathroom, 865 sqft

Condo / Townhouse on 0.00 Acres

Akinsdale, St. Albert, AB

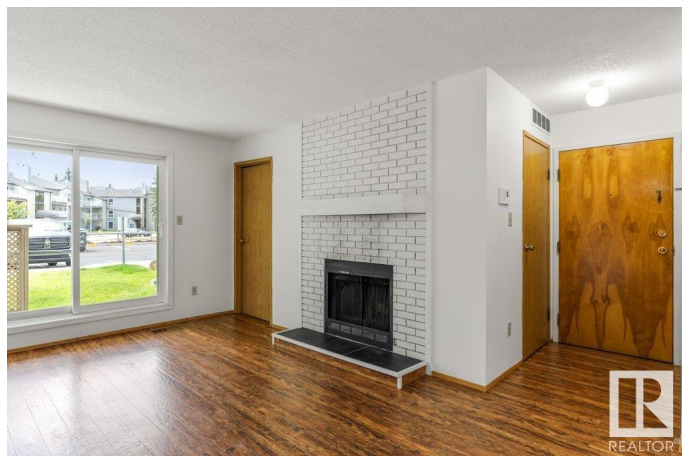
Well-designed 2-bedroom suite in ALPINE ESTATES. Just minutes from shopping, schools, and parks, this home is ideal for first-time buyers, investor or those looking to downsize. The living room is bright and spacious and open to the dining nook. Enjoy the functional kitchen layout with ample counter space and storage. Two generous sized bedrooms, in-suite laundry, durable laminate flooring and a full 4-piece bathroom. Low condo fees of \$490.34 include water! Clean, comfortable, and move-in ready!

Built in 1982

Essential Information

MLS® #	E4444760
Price	\$134,900
Bedrooms	2
Bathrooms	1.00
Full Baths	1
Square Footage	865
Acres	0.00
Year Built	1982
Type	Condo / Townhouse
Sub-Type	Lowrise Apartment
Style	Single Level Apartment
Status	Active

Community Information



Address	104 44 Alpine Place
Area	St. Albert
Subdivision	Akinsdale
City	St. Albert
County	ALBERTA
Province	AB
Postal Code	T8N 3Y2

Amenities

Amenities	Parking-Visitor, Patio, Security Door
Parking	Stall

Interior

Appliances	Dishwasher-Built-In, Dryer, Hood Fan, Refrigerator, Stove-Electric, Washer
Heating	Forced Air-1, Natural Gas
# of Stories	3
Stories	1
Has Basement	Yes
Basement	None, No Basement

Exterior

Exterior	Wood, Stucco
Exterior Features	Landscaped, Public Transportation, Schools, Shopping Nearby
Roof	Asphalt Shingles
Construction	Wood, Stucco
Foundation	Concrete Perimeter

Additional Information

Date Listed	June 27th, 2025
Days on Market	1
Zoning	Zone 24
Condo Fee	\$490

DATA IS DEEMED RELIABLE BUT IS NOT GUARANTEED ACCURATE BY THE REALTORS® ASSOCIATION OF EDMONTON. COPYRIGHT 2025 BY THE REALTORS® ASSOCIATION OF EDMONTON. ALL RIGHTS RESERVED. Trademarks are owned or controlled by the Canadian Real Estate Association (CREA) and identify real estate professionals who are members of CREA (REALTOR®, REALTORS®) and/or the quality of services they provide (MLS®, Multiple Listing Service®)

Listing information last updated on June 28th, 2025 at 4:32am MDT