

\$299,900 - Twp 532a Rr 275, Rural Parkland County

MLS® #E4444180

\$299,900

0 Bedroom, 0.00 Bathroom,
Rural on 14.58 Acres

None, Rural Parkland County, AB

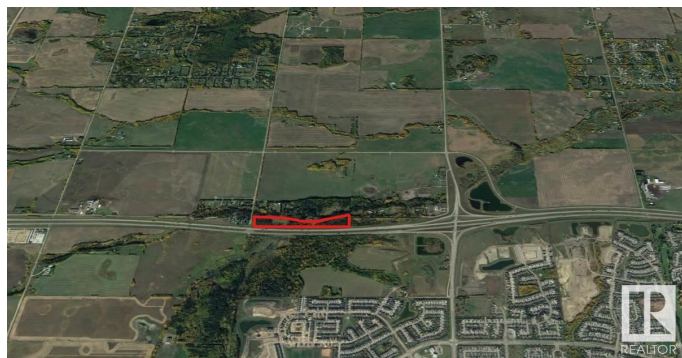
14.58 Acres â€“ Treed Land with Huge Potential A rare 14.58-acre parcel packed with mature trees for privacy and natural beauty. Set at the end of a quiet dead-end road, this property also borders the Yellowhead Highway for unbeatable access. Just one mile west of the Jennifer Heil Way turnoff into Spruce Grove. Perfect for a private retreat, future development, or a smart investment. Priced to move.

Essential Information

MLS® #	E4444180
Price	\$299,900
Bathrooms	0.00
Acres	14.58
Type	Rural
Sub-Type	Vacant Lot/Land
Status	Active

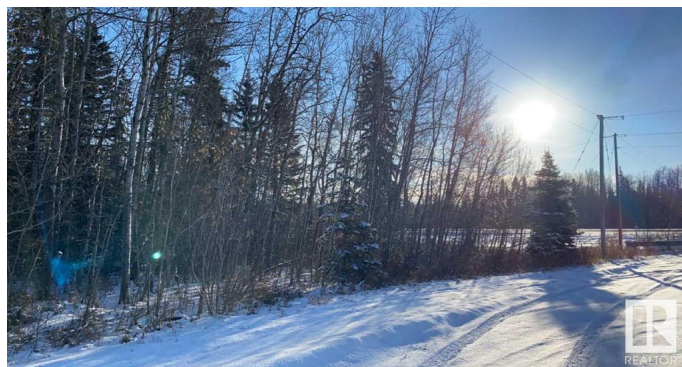
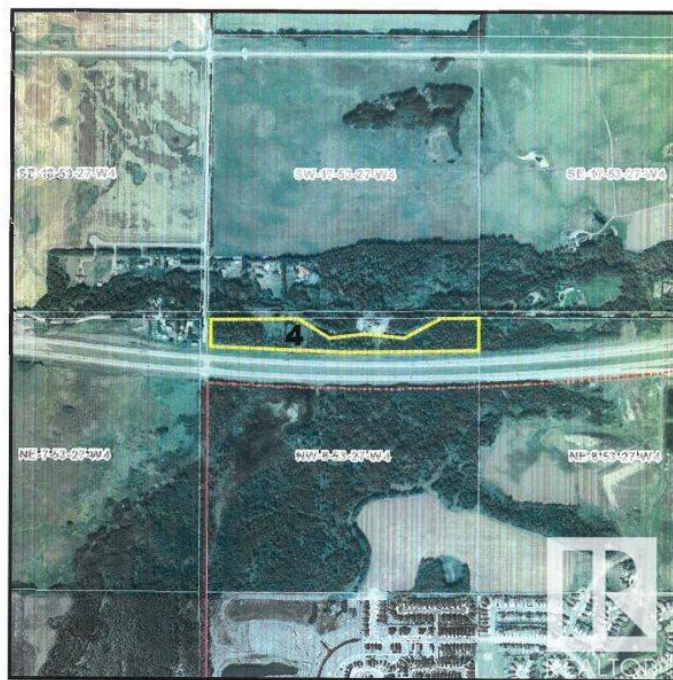
Community Information

Address	Twp 532a Rr 275
Area	Rural Parkland County
Subdivision	None
City	Rural Parkland County
County	ALBERTA
Province	AB
Postal Code	T7Y 1A3



Alberta
Infrastructure

S8407 - Site Map



Exterior

Exterior Features Cul-De-Sac, Golf Nearby, Not Landscaped, Playground Nearby, Private Setting, Public Swimming Pool, Schools, Shopping Nearby, Treed Lot

Additional Information

Date Listed June 25th, 2025
Days on Market 28
Zoning Zone 70

DATA IS DEEMED RELIABLE BUT IS NOT GUARANTEED ACCURATE BY THE REALTORS® ASSOCIATION OF EDMONTON. COPYRIGHT 2025 BY THE REALTORS® ASSOCIATION OF EDMONTON. ALL RIGHTS RESERVED.Trademarks are owned or controlled by the Canadian Real Estate Association (CREA) and identify real estate professionals who are members of CREA (REALTOR®, REALTORS®) and/or the quality of services they provide (MLS®, Multiple Listing Service®)
Listing information last updated on July 23rd, 2025 at 8:32pm MDT