

## \$379,000 - 1 Nordal Close, Wetaskiwin

MLS® #E4443951

**\$379,000**

3 Bedroom, 3.00 Bathroom, 1,225 sqft

Single Family on 0.00 Acres

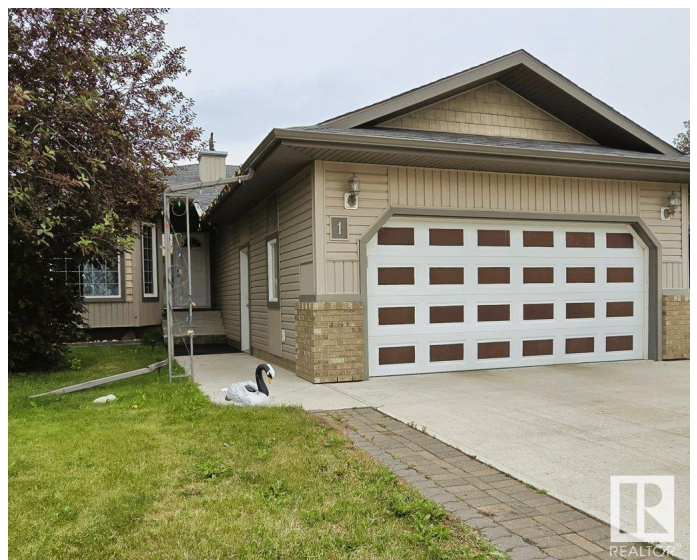
Aspen Ridge (Wetaskiwin), Wetaskiwin, AB

LUXURIOUS ADULT LIVING â€™ WITHOUT THE FEES! This beautifully maintained 3-bedroom bungalow style half duplex offers the perfect blend of comfort and convenience. Step into the bright, open-concept living space featuring vaulted ceilings and a spacious kitchen, dining and living room. The main floor also boasts a spacious office/den with beautiful bay window, main floor laundry, a 4 piece family bath and a huge primary suite complete with double closets and a 4-piece ensuite. A cozy sunroom leads to the landscaped back yard featuring fruit trees, a small garden and a nice sized storage shed. The fully finished basement includes two additional bedrooms and a 3-piece bath, offering plenty of space for guests or hobbies. Recent updates include a newer hot water tank (approx. 2 years), A/C, and a rebuilt furnace (Dec 2024). A turn-key home in a prime locationâ€™this is adult living at its best!

Built in 2006

### Essential Information

MLS® #	E4443951
Price	\$379,000
Bedrooms	3
Bathrooms	3.00
Full Baths	3



Square Footage	1,225
Acres	0.00
Year Built	2006
Type	Single Family
Sub-Type	Half Duplex
Style	Bungalow
Status	Active

### **Community Information**

Address	1 Nordal Close
Area	Wetaskiwin
Subdivision	Aspen Ridge (Wetaskiwin)
City	Wetaskiwin
County	ALBERTA
Province	AB
Postal Code	T9A 0P1

### **Amenities**

Amenities	Air Conditioner, Sunroom, Vaulted Ceiling
Parking	Double Garage Attached, Front Drive Access, Heated, Insulated

### **Interior**

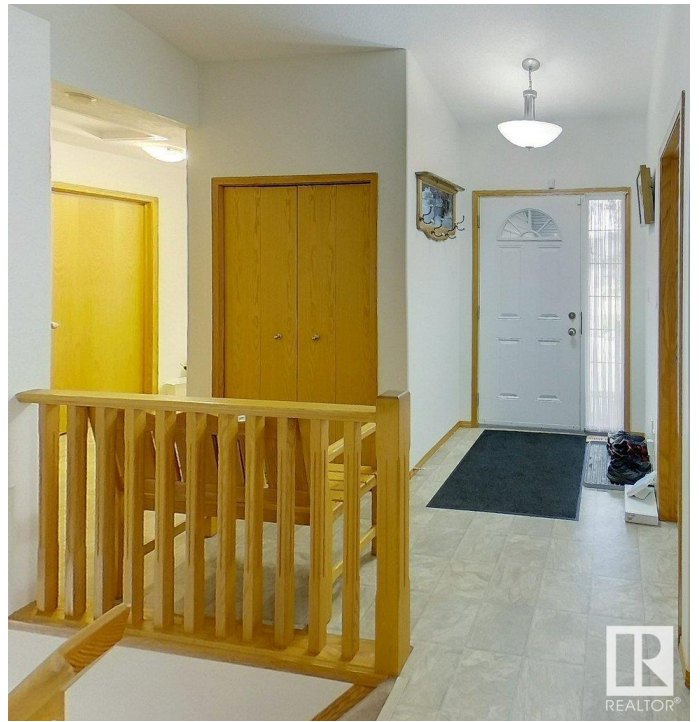
Interior Features	ensuite bathroom
Appliances	Air Conditioning-Central, Dishwasher-Built-In, Dryer, Garage Control, Garage Opener, Microwave Hood Fan, Refrigerator, Storage Shed, Stove-Electric, Washer, Window Coverings, See Remarks
Heating	Forced Air-1, Natural Gas
Stories	2
Has Basement	Yes
Basement	Full, Finished

### **Exterior**

Exterior	Wood, Brick, Vinyl
Exterior Features	Corner Lot, Cul-De-Sac, Fenced, Fruit Trees/Shrubs, Golf Nearby, Landscaped, Playground Nearby, Public Swimming Pool, Vegetable Garden
Roof	Asphalt Shingles
Construction	Wood, Brick, Vinyl
Foundation	Concrete Perimeter

## Additional Information

Date Listed June 23rd, 2025  
Days on Market 11  
Zoning Zone 80



DATA IS DEEMED RELIABLE BUT IS NOT GUARANTEED ACCURATE BY THE REALTORS® ASSOCIATION OF EDMONTON. COPYRIGHT 2025 BY THE REALTORS® ASSOCIATION OF EDMONTON. ALL RIGHTS RESERVED. Trademarks are owned or controlled by the Canadian Real Estate Association (CREA) and identify real estate professionals who are members of CREA (REALTOR®, REALTORS®) and/or the quality of services they provide (MLS®, Multiple Listing Service®)

Listing information last updated on July 3rd, 2025 at 10:47pm MDT