

\$999,900 - 80 52210 Rge Rd 192, Rural Beaver County

MLS® #E4443881

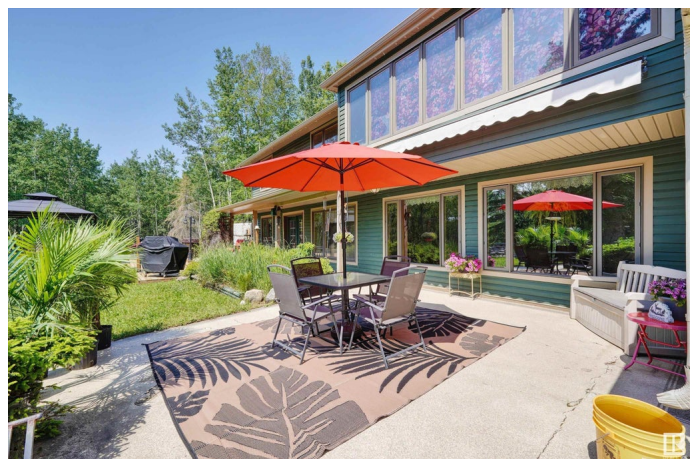
\$999,900

7 Bedroom, 3.50 Bathroom, 5,543 sqft

Rural on 38.60 Acres

El Greco Estate, Rural Beaver County, AB

MANSION in the Woods! NESTLED at the END of the subdivision, 35 mins East of Sherwood Park. This PRIVATE, TREED oasis has meandering TRAILS, backs onto Blackfoot Provincial area & has a FENCED facility w/ a COVERED SHELTER for horses. The WORKSHOP is steps away from the home, is HEATED & has a full concrete basement! A "YELLOWSTONE," theme permeates the house w/ hard surface flooring, RUSTIC wood, STONE, brick, tile & an ELEVATOR. Cook in the U-SHAPED kitchen opening onto the PARLOR w/ a real WOOD STOVE, a bedroom, bath & LAUNDRY area. Eat in a GRAND dining area bathed in NATURAL LIGHT or ENTERTAIN in the separate living room w/ a SOARING CEILING, immense gas FIREPLACE w/ rustic stone face & ornate high-end WET BAR. 7 bedrooms include a LARGE primary w/wood stove & dual WALK-IN CLOSETS; the loft, office, LIBRARY, GYM, 2 bathrooms, storage & separate utility area complete the second floor. Outdoor area has DECKS, PATIO, hot tub, concrete driveway & fire pit! You will LOVE it!



Built in 1979

Essential Information

MLS® # E4443881

Price \$999,900

Bedrooms	7
Bathrooms	3.50
Full Baths	3
Half Baths	1
Square Footage	5,543
Acres	38.60
Year Built	1979
Type	Rural
Sub-Type	Detached Single Family
Style	2 Storey
Status	Active

Community Information

Address	80 52210 Rge Rd 192
Area	Rural Beaver County
Subdivision	El Greco Estate
City	Rural Beaver County
County	ALBERTA
Province	AB
Postal Code	T0B 4J5

Amenities

Features	Deck, Detectors Smoke, Exercise Room, Fire Pit, Gazebo, Parking-Extra, Patio, R.V. Storage, Wet Bar, Workshop
Parking Spaces	6

Interior

Heating	Forced Air-2, Natural Gas
Fireplace	Yes
Stories	2
Has Basement	Yes
Basement	None, No Basement

Exterior

Exterior	Wood
Exterior Features	Landscaped, No Through Road, Recreation Use, Rolling Land, Stream/Pond, Treed Lot, Partially Fenced
Construction	Wood
Foundation	Concrete Perimeter

Additional Information

Date Listed June 23rd, 2025
Days on Market 58
Zoning Zone 80

DATA IS DEEMED RELIABLE BUT IS NOT GUARANTEED ACCURATE BY THE REALTORS® ASSOCIATION OF EDMONTON. COPYRIGHT 2025 BY THE REALTORS® ASSOCIATION OF EDMONTON. ALL RIGHTS RESERVED.Trademarks are owned or controlled by the Canadian Real Estate Association (CREA) and identify real estate professionals who are members of CREA (REALTOR®, REALTORS®) and/or the quality of services they provide (MLS®, Multiple Listing Service®)
Listing information last updated on August 20th, 2025 at 9:02pm MDT