

# \$439,900 - 4015 6 Street, Edmonton

MLS® #E4443852

**\$439,900**

4 Bedroom, 3.50 Bathroom, 1,346 sqft  
Single Family on 0.00 Acres

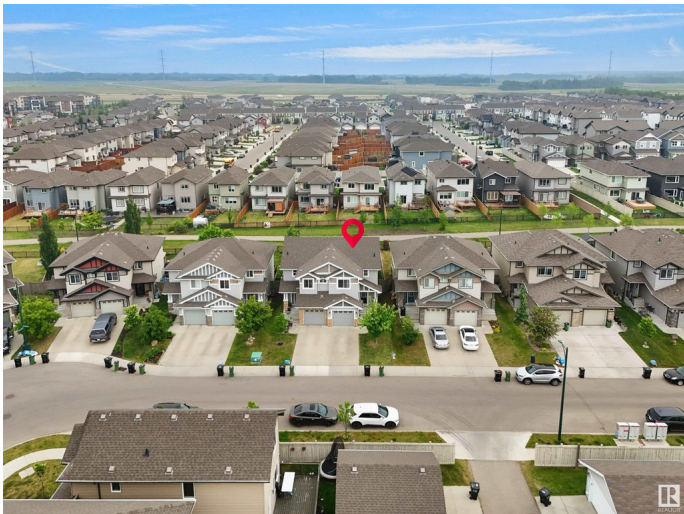
Maple Crest, Edmonton, AB

Welcome to this stunning and well-maintained half duplex BACKING ONTO WALKING TRAIL, nestled in a vibrant community, just minutes away from major amenities including shopping, schools, parks, and public transit. The main floor boasts a bright and airy living space filled with natural light, creating a warm and inviting atmosphere. You'll also find a convenient half washroom perfect for guests. Upstairs features 3 spacious bedrooms with 2 full washrooms. The fully finished basement adds even more living space with an additional bedroom and a full washroom, ideal for guests or extended family with the second kitchen. Enjoy outdoor living in the beautifully maintained backyard, complete with a large deck perfect for entertaining. This home is a perfect blend of comfort, style, and functionality.

Built in 2013

## Essential Information

MLS® #	E4443852
Price	\$439,900
Bedrooms	4
Bathrooms	3.50
Full Baths	3
Half Baths	1
Square Footage	1,346



Acres	0.00
Year Built	2013
Type	Single Family
Sub-Type	Half Duplex
Style	2 Storey
Status	Active

### **Community Information**

Address	4015 6 Street
Area	Edmonton
Subdivision	Maple Crest
City	Edmonton
County	ALBERTA
Province	AB
Postal Code	T6T 0T5

### **Amenities**

Amenities	No Animal Home, No Smoking Home
Parking Spaces	2
Parking	Single Garage Attached

### **Interior**

Interior Features	ensuite bathroom
Appliances	Dishwasher-Built-In, Dryer, Garage Opener, Stove-Electric, Washer, Refrigerators-Two, Microwave Hood Fan-Two
Heating	Forced Air-1, Natural Gas
Stories	2
Has Basement	Yes
Basement	Full, Finished

### **Exterior**

Exterior	Wood, Asphalt
Exterior Features	Playground Nearby, Public Transportation, Schools, Shopping Nearby
Roof	Asphalt Shingles
Construction	Wood, Asphalt
Foundation	Concrete Perimeter

### **Additional Information**

Date Listed	June 23rd, 2025
-------------	-----------------

Days on Market 8

Zoning Zone 30

DATA IS DEEMED RELIABLE BUT IS NOT GUARANTEED ACCURATE BY THE REALTORS® ASSOCIATION OF EDMONTON. COPYRIGHT 2025 BY THE REALTORS® ASSOCIATION OF EDMONTON. ALL RIGHTS RESERVED. Trademarks are owned or controlled by the Canadian Real Estate Association (CREA) and identify real estate professionals who are members of CREA (REALTOR®, REALTORS®) and/or the quality of services they provide (MLS®, Multiple Listing Service®)

Listing information last updated on July 1st, 2025 at 7:48pm MDT