

## \$229,900 - 10236 106 Street, Westlock

MLS® #E4442706

**\$229,900**

4 Bedroom, 2.00 Bathroom, 955 sqft

Single Family on 0.00 Acres

Westlock, Westlock, AB

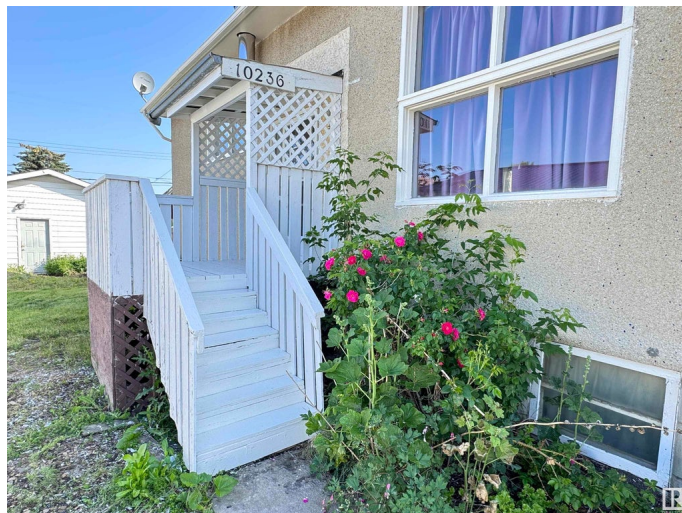
Stylish 955 sq ft bilevel in prime downtown Westlock location! Features vaulted ceilings, new shingles, fresh paint, and updated flooring throughout. Enjoy year-round comfort with hi-eff furnace & central A/C. Versatile layout with 2 beds/1 bath up & 2 beds/1 bath down, plus dual kitchens & laundry rooms. Dark Ash cabinetry highlights the upper kitchen. Stucco exterior, 125 AMP service, and spacious 24x26 det garage complete this move-in-ready home on a fenced lot. Ideal for multi-gen living or investors!

Built in 1953

### Essential Information

|                |                        |
|----------------|------------------------|
| MLS® #         | E4442706               |
| Price          | \$229,900              |
| Bedrooms       | 4                      |
| Bathrooms      | 2.00                   |
| Full Baths     | 2                      |
| Square Footage | 955                    |
| Acres          | 0.00                   |
| Year Built     | 1953                   |
| Type           | Single Family          |
| Sub-Type       | Detached Single Family |
| Style          | Bi-Level               |
| Status         | Active                 |

### Community Information



|             |                  |
|-------------|------------------|
| Address     | 10236 106 Street |
| Area        | Westlock         |
| Subdivision | Westlock         |
| City        | Westlock         |
| County      | ALBERTA          |
| Province    | AB               |
| Postal Code | T7P 1W7          |

### **Amenities**

|                |  |
|----------------|--|
| Amenities      | Air Conditioner, Front Porch, Hot Water Natural Gas, No Animal Home, No Smoking Home, Parking-Extra, Vaulted Ceiling, Wood Windows, Workshop |
| Parking Spaces | 6  |
| Parking        | Double Garage Detached   |

### **Interior**

|              |   |
|--------------|---|
| Appliances   | Air Conditioning-Central, Garage Opener, Refrigerator, Stove-Electric, Window Coverings, Dryer-Two, Washers-Two |
| Heating      | Forced Air-1, Natural Gas   |
| Fireplace    | Yes   |
| Fireplaces   | Woodstove   |
| Stories      | 2   |
| Has Basement | Yes   |
| Basement     | Full, Finished  |

### **Exterior**

|                   |   |
|-------------------|---|
| Exterior          | Wood, Stucco  |
| Exterior Features | Back Lane, Fenced, Flat Site, Playground Nearby, Schools, Shopping Nearby, Vegetable Garden |
| Roof              | Asphalt Shingles  |
| Construction      | Wood, Stucco  |
| Foundation        | Concrete Perimeter  |

### **School Information**

|            |          |
|------------|----------|
| Elementary | St.Mary  |
| Middle     | St. Mary |
| High       | St. Mary |

### **Additional Information**

|             |                 |
|-------------|-----------------|
| Date Listed | June 16th, 2025 |
|-------------|-----------------|

Days on Market 33

Zoning Zone 70

DATA IS DEEMED RELIABLE BUT IS NOT GUARANTEED ACCURATE BY THE REALTORS® ASSOCIATION OF EDMONTON. COPYRIGHT 2025 BY THE REALTORS® ASSOCIATION OF EDMONTON. ALL RIGHTS RESERVED. Trademarks are owned or controlled by the Canadian Real Estate Association (CREA) and identify real estate professionals who are members of CREA (REALTOR®, REALTORS®) and/or the quality of services they provide (MLS®, Multiple Listing Service®)

Listing information last updated on July 19th, 2025 at 5:32pm MDT