

## \$559,900 - 8516 158a Avenue, Edmonton

MLS® #E4442361

**\$559,900**

5 Bedroom, 3.00 Bathroom, 1,577 sqft

Single Family on 0.00 Acres

Belle Rive, Edmonton, AB

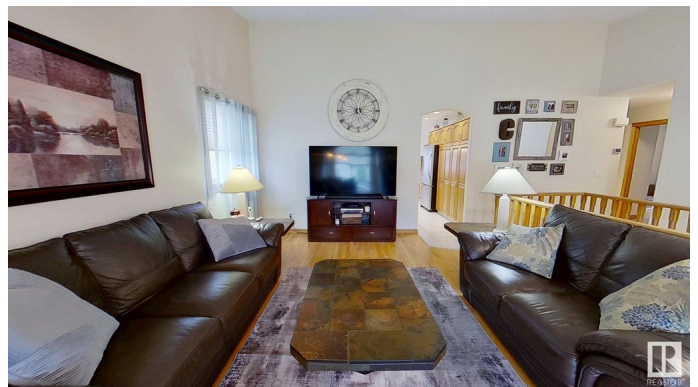
Nestled in the desirable community of Belle Rive, this beautifully maintained raised bungalow offers 1,577 sqft. of thoughtfully designed living space and an oversized heated garage. The main floor boasts an open concept layout with hardwood and tile flooring throughout. The spacious kitchen features granite countertops, stainless steel appliances, and an open dining area perfect for entertaining. There are three bedrooms on the main level, including a primary suite with a luxurious steam shower, and a 4-piece hallway bathroom with a large soaker tub. The fully finished basement adds incredible functionality, offering two additional bedrooms, a workout room / den, a 3-piece bathroom, a large living area, and a cozy wood-burning stove. Additional highlights include central A/C, lots of storage, a beautifully landscaped yard, maintenance-free deck and fence, new sump pump, new hot water tank, and shingles replaced in 2018. Lovingly cared for by its original owners, this home is move-in ready and a must-see!

Built in 1996

### Essential Information

MLS® # E4442361

Price \$559,900



Bedrooms	5
Bathrooms	3.00
Full Baths	3
Square Footage	1,577
Acres	0.00
Year Built	1996
Type	Single Family
Sub-Type	Detached Single Family
Style	Bungalow
Status	Active

### **Community Information**

Address	8516 158a Avenue
Area	Edmonton
Subdivision	Belle Rive
City	Edmonton
County	ALBERTA
Province	AB
Postal Code	T5Z 3B6

### **Amenities**

Amenities	Air Conditioner, Carbon Monoxide Detectors, Detectors Smoke
Parking	Double Garage Attached, Heated

### **Interior**

Interior Features	ensuite bathroom
Appliances	Air Conditioning-Central, Dishwasher-Built-In, Dryer, Garage Opener, Garburator, Oven-Microwave, Refrigerator, Storage Shed, Stove-Electric, Washer, Window Coverings
Heating	Forced Air-1, Natural Gas
Fireplace	Yes
Fireplaces	Woodstove
Stories	2
Has Basement	Yes
Basement	Full, Finished

### **Exterior**

Exterior	Wood, Brick, Vinyl
Exterior Features	Landscaped, Playground Nearby, Schools, Shopping Nearby

Roof	Asphalt Shingles
Construction	Wood, Brick, Vinyl
Foundation	Concrete Perimeter

**Additional Information**

Date Listed	June 13th, 2025
Days on Market	2
Zoning	Zone 28

DATA IS DEEMED RELIABLE BUT IS NOT GUARANTEED ACCURATE BY THE REALTORS® ASSOCIATION OF EDMONTON. COPYRIGHT 2025 BY THE REALTORS® ASSOCIATION OF EDMONTON. ALL RIGHTS RESERVED.Trademarks are owned or controlled by the Canadian Real Estate Association (CREA) and identify real estate professionals who are members of CREA (REALTOR®, REALTORS®) and/or the quality of services they provide (MLS®, Multiple Listing Service®)

Listing information last updated on June 15th, 2025 at 9:31am MDT