

## \$94,900 - 9028 Jasper Avenue, Edmonton

MLS® #E4441888

**\$94,900**

2 Bedroom, 1.00 Bathroom, 856 sqft

Condo / Townhouse on 0.00 Acres

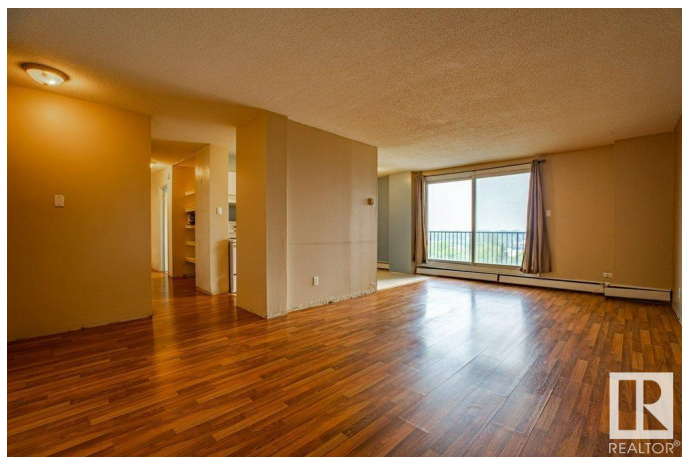
Boyle Street, Edmonton, AB

Imagine waking up to incredible 9th-floor city views before stepping out your door to the buzz of Jasper Avenue. This isn't just a condo; it's your launchpad to the ultimate downtown lifestyle in the solid, concrete Viewpoint building. This 857 sq ft, 2-bedroom home is ready for your design ideas, but its prime location is undeniable. Explore local eateries, browse unique shops, or enjoy a night out without ever needing a car. With seamless access to transit, the core, and river valley trails, your weekends will be filled with adventure. Featuring one of the largest floor plans in the building, this unit is a fantastic foundation to add immediate value and your personal style. A heated underground parking stall and a convenient storage cage are included. If you're seeking a home that combines an unbeatable location with outstanding potential, this is it. See it today and start planning your new life!

Built in 1971

### Essential Information

|            |          |
|------------|----------|
| MLS® #     | E4441888 |
| Price      | \$94,900 |
| Bedrooms   | 2        |
| Bathrooms  | 1.00     |
| Full Baths | 1        |



|                |                        |
|----------------|------------------------|
| Square Footage | 856                    |
| Acres          | 0.00                   |
| Year Built     | 1971                   |
| Type           | Condo / Townhouse      |
| Sub-Type       | Apartment High Rise    |
| Style          | Single Level Apartment |
| Status         | Active                 |

### Community Information

|             |                    |
|-------------|--------------------|
| Address     | 9028 Jasper Avenue |
| Area        | Edmonton           |
| Subdivision | Boyle Street       |
| City        | Edmonton           |
| County      | ALBERTA            |
| Province    | AB                 |
| Postal Code | T5H 3Y6            |

### Amenities

|                |              |
|----------------|--------------|
| Amenities      | Storage Cage |
| Parking Spaces | 1            |
| Parking        | Underground  |

### Interior

|              |                                   |
|--------------|-----------------------------------|
| Appliances   | See Remarks                       |
| Heating      | Baseboard, Hot Water, Natural Gas |
| # of Stories | 11                                |
| Stories      | 1                                 |
| Has Basement | Yes                               |
| Basement     | None, No Basement                 |

### Exterior

|                   |   |
|-------------------|---|
| Exterior          | Concrete, Stucco  |
| Exterior Features | River Valley View, Schools, Shopping Nearby, View City, View Downtown |
| Roof              | Tar & Gravel  |
| Construction      | Concrete, Stucco  |
| Foundation        | Concrete Perimeter  |

### School Information

|            |                  |
|------------|------------------|
| Elementary | Norwood/Theresa  |
| Middle     | Spruce/Alphonsus |
| High       | Victoria/Joseph  |

### **Additional Information**

|                |                 |
|----------------|-----------------|
| Date Listed    | June 12th, 2025 |
| Days on Market | 3               |
| Zoning         | Zone 13         |
| Condo Fee      | \$825           |

DATA IS DEEMED RELIABLE BUT IS NOT GUARANTEED ACCURATE BY THE REALTORS® ASSOCIATION OF EDMONTON. COPYRIGHT 2025 BY THE REALTORS® ASSOCIATION OF EDMONTON. ALL RIGHTS RESERVED. Trademarks are owned or controlled by the Canadian Real Estate Association (CREA) and identify real estate professionals who are members of CREA (REALTOR®, REALTORS®) and/or the quality of services they provide (MLS®, Multiple Listing Service®)

Listing information last updated on June 15th, 2025 at 5:02pm MDT