

\$60,000 - 73 652051 Rng Rd 224, Rural Athabasca County

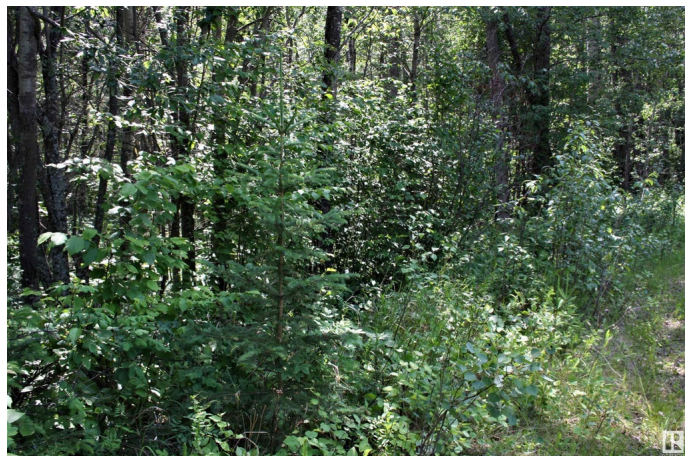
MLS® #E4441761

\$60,000

0 Bedroom, 0.00 Bathroom,
Rural on 3.04 Acres

Century Estates_CATH, Rural Athabasca
County, AB

Looking to get away from the hustle and bustle, come enjoy acreage living in this subdivision which boosts privacy on Tawatinaw Drive. Just off the beautiful Tawatinaw valley with lots of crown land in the area to get some extra recreational space in. Start out as your weekend retreat and build your home in this peaceful community. Very little gravel and only minutes to Athabasca. Numerous lakes in the area for the fisherman, great shopping, schools & recreation in Athabasca. Take a drive and see for yourself.



Essential Information

MLS® #	E4441761
Price	\$60,000
Bathrooms	0.00
Acres	3.04
Type	Rural
Sub-Type	Vacant Lot/Land
Status	Active

Community Information

Address	73 652051 Rng Rd 224
Area	Rural Athabasca County
Subdivision	Century Estates_CATH

City	Rural Athabasca County
County	ALBERTA
Province	AB
Postal Code	T9S 1B9

Exterior

Exterior Features Treed Lot

Additional Information

Date Listed	June 11th, 2025
Days on Market	36
Zoning	Zone 60

DATA IS DEEMED RELIABLE BUT IS NOT GUARANTEED ACCURATE BY THE REALTORS® ASSOCIATION OF EDMONTON. COPYRIGHT 2025 BY THE REALTORS® ASSOCIATION OF EDMONTON. ALL RIGHTS RESERVED. Trademarks are owned or controlled by the Canadian Real Estate Association (CREA) and identify real estate professionals who are members of CREA (REALTOR®, REALTORS®) and/or the quality of services they provide (MLS®, Multiple Listing Service®)

Listing information last updated on July 17th, 2025 at 8:32pm MDT