

\$499,000 - 13335 110a Avenue, Edmonton

MLS® #E4441707

\$499,000

3 Bedroom, 2.00 Bathroom, 949 sqft

Single Family on 0.00 Acres

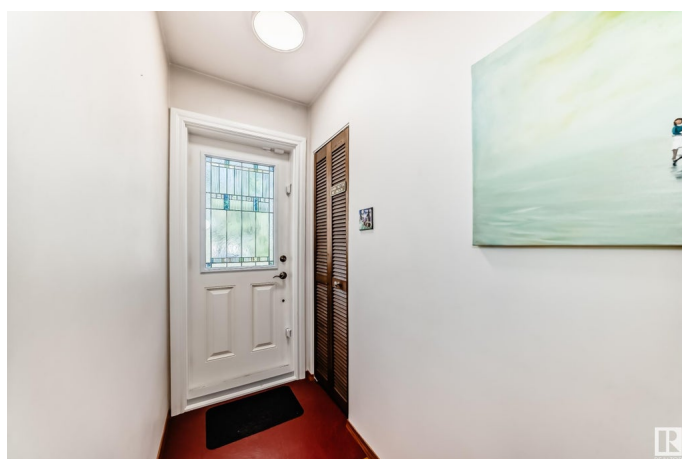
North Glenora, Edmonton, AB

Extensively renovated within the last 5 years, this upgraded character home blends classic appeal with modern function. Sitting on a large, south-facing lot with professional landscaping, it features original hardwood floors in exceptional condition, coved ceilings, and an open-concept living, dining, and kitchen area. The interior offers impressive storage with well-sized closets and a smart layout. Nearly every aspect of the home has been updated, including the kitchen, bathrooms, windows, fireplace, furnace, hot water tank, plumbing, electrical, siding, shingles, fencing, and more—all professionally completed. Located just minutes from the River Valley and within walking distance to schools, public transit, shopping, and recreation facilities. A move-in ready opportunity—show with confidence.

Built in 1953

Essential Information

| | |
|----------------|-----------|
| MLS® # | E4441707 |
| Price | \$499,000 |
| Bedrooms | 3 |
| Bathrooms | 2.00 |
| Full Baths | 2 |
| Square Footage | 949 |
| Acres | 0.00 |



| | |
|------------|------------------------|
| Year Built | 1953 |
| Type | Single Family |
| Sub-Type | Detached Single Family |
| Style | Bungalow |
| Status | Active |

Community Information

| | |
|-------------|-------------------|
| Address | 13335 110a Avenue |
| Area | Edmonton |
| Subdivision | North Glenora |
| City | Edmonton |
| County | ALBERTA |
| Province | AB |
| Postal Code | T5M 2M6 |

Amenities

| | |
|----------------|--|
| Amenities | Carbon Monoxide Detectors, Detectors Smoke |
| Parking Spaces | 2 |
| Parking | Over Sized, Single Garage Detached |

Interior

| | |
|--------------|---|
| Appliances | Dryer, Hood Fan, Refrigerator, Stove-Electric, Washer |
| Heating | Forced Air-1, Natural Gas |
| Fireplace | Yes |
| Fireplaces | Corner |
| Stories | 2 |
| Has Basement | Yes |
| Basement | Full, Finished |

Exterior

| | |
|-------------------|--|
| Exterior | Wood, Vinyl |
| Exterior Features | Back Lane, Fenced, Golf Nearby, Landscaped, Playground Nearby, Public Swimming Pool, Public Transportation |
| Roof | Asphalt Shingles |
| Construction | Wood, Vinyl |
| Foundation | Concrete Perimeter |

School Information

| | |
|------------|-------------------|
| Elementary | CORONATION SCHOOL |
|------------|-------------------|

| | |
|--------|----------------------|
| Middle | WESTMINSTER SCHOOL |
| High | ROSS SHEPPARD SCHOOL |

Additional Information

| | |
|-------------|-----------------|
| Date Listed | June 11th, 2025 |
|-------------|-----------------|

| | |
|----------------|---|
| Days on Market | 5 |
|----------------|---|

| | |
|--------|---------|
| Zoning | Zone 07 |
|--------|---------|

DATA IS DEEMED RELIABLE BUT IS NOT GUARANTEED ACCURATE BY THE REALTORS® ASSOCIATION OF EDMONTON. COPYRIGHT 2025 BY THE REALTORS® ASSOCIATION OF EDMONTON. ALL RIGHTS RESERVED. Trademarks are owned or controlled by the Canadian Real Estate Association (CREA) and identify real estate professionals who are members of CREA (REALTOR®, REALTORS®) and/or the quality of services they provide (MLS®, Multiple Listing Service®)

Listing information last updated on June 16th, 2025 at 8:32am MDT