

Courtesy Of Darin B Baxandall Of RE/MAX Elite

\$1,379,000 - 52147 Rge Road 231, Rural Strathcona County

MLS® #E4441586

\$1,379,000

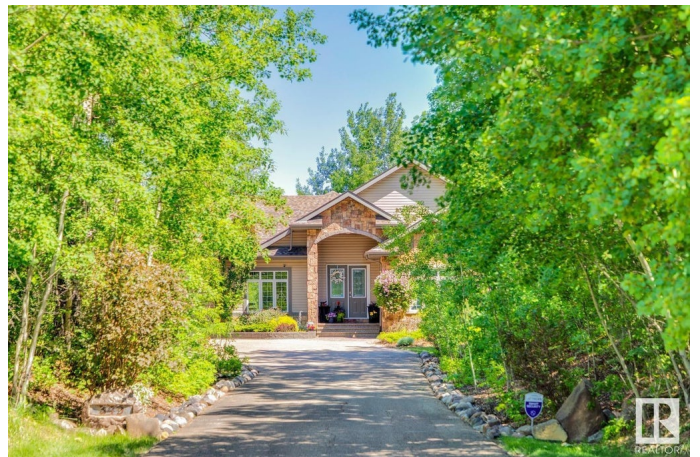
5 Bedroom, 3.50 Bathroom, 2,061 sqft
Rural on 2.57 Acres

Waterton Estates, Rural Strathcona County,
AB

Combining beauty & elegance! An absolute show stopper in Waterton Estates! Nestled amongst trees, in a private oasis you'll find this superb 2061sf bungalow on 2.57 immaculate acres. Entrance warmly welcomes you into a beautifully appointed formal L/R with pristine hardwood, stunning fireplace w/elegant stone accents. Immaculate, contemporary kitchen featuring white cabinets, S/S appl's ideal island & dining area adorned with floor-to-ceiling windows. Graced w/6 generous BDRM's (3 up 3 down) all streaming w/natural light & 4 baths! Breathtaking 3-season room that evokes a sense of zen tranquility. Awe inspiring laundry rm w/sink, closet & chute! Grand staircase ushers to a spectacular rec rm, elegantly adorned w/luxurious, plush carpeting & abundance of b/i shelving & media space. Ample storage & cold room you won't have issues making use of space! Impeccable triple heated garage w/epoxy floor! Enchanting landscaping, a gardener's dream oasis! CITY WATER, paved driveway, room for a garage or shop! AMAZING

Built in 2006

Essential Information



MLS® #	E4441586
Price	\$1,379,000
Bedrooms	5
Bathrooms	3.50
Full Baths	3
Half Baths	1
Square Footage	2,061
Acres	2.57
Year Built	2006
Type	Rural
Sub-Type	Detached Single Family
Style	Bungalow
Status	Active

Community Information

Address	52147 Rge Road 231
Area	Rural Strathcona County
Subdivision	Waterton Estates
City	Rural Strathcona County
County	ALBERTA
Province	AB
Postal Code	T8B 1A4

Amenities

Features	Air Conditioner, Detectors Smoke, Fire Pit, Hot Tub, No Animal Home, No Smoking Home, Sunroom
----------	---

Interior

Interior Features	ensuite bathroom
Heating	Forced Air-1, Natural Gas
Fireplace	Yes
Stories	2
Has Basement	Yes
Basement	Full, Finished

Exterior

Exterior	Wood
Exterior Features	Backs Onto Park/Trees, Fruit Trees/Shrubs, Golf Nearby, Landscaped, Low Maintenance Landscape, Paved Lane, Private Setting, Treed Lot

Construction Wood
Foundation Concrete Perimeter

Additional Information

Date Listed June 10th, 2025
Days on Market 5
Zoning Zone 80

DATA IS DEEMED RELIABLE BUT IS NOT GUARANTEED ACCURATE BY THE REALTORS® ASSOCIATION OF EDMONTON. COPYRIGHT 2025 BY THE REALTORS® ASSOCIATION OF EDMONTON. ALL RIGHTS RESERVED. Trademarks are owned or controlled by the Canadian Real Estate Association (CREA) and identify real estate professionals who are members of CREA (REALTOR®, REALTORS®) and/or the quality of services they provide (MLS®, Multiple Listing Service®)

Listing information last updated on June 15th, 2025 at 5:02pm MDT