

\$459,900 - 6525 167b Avenue, Edmonton

MLS® #E4441439

\$459,900

3 Bedroom, 2.50 Bathroom, 1,506 sqft

Single Family on 0.00 Acres

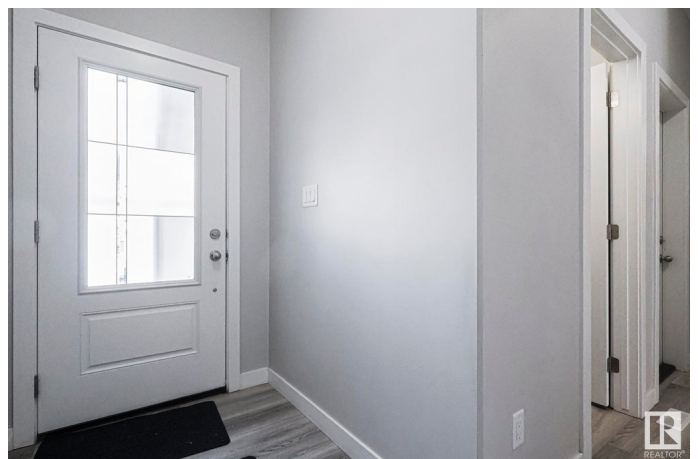
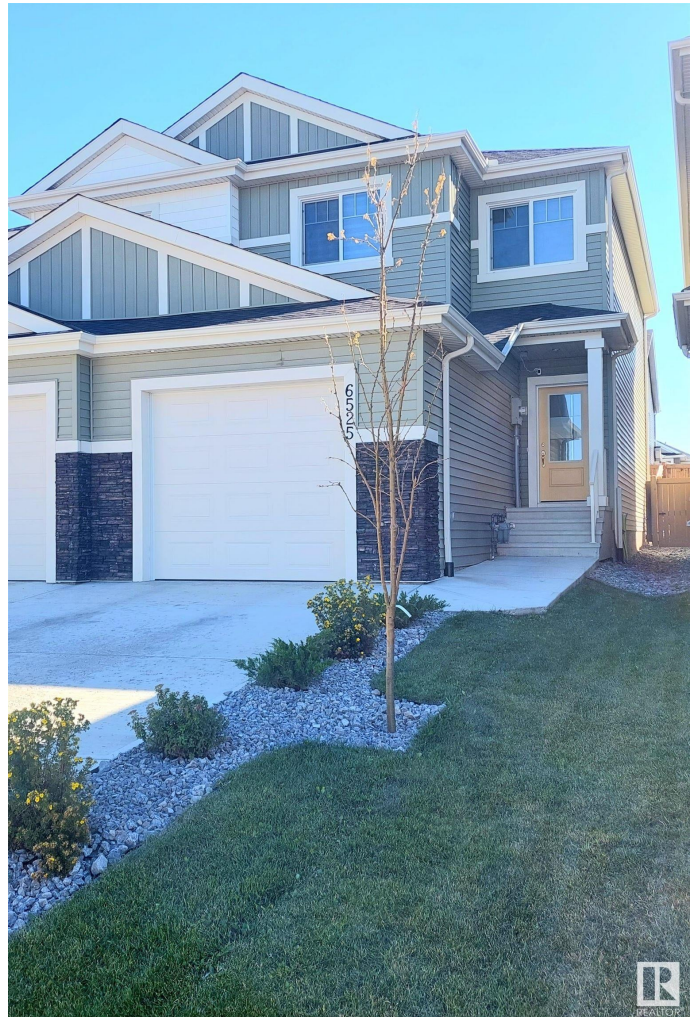
McConachie Area, Edmonton, AB

This beautiful duplex is located in the family-oriented community of MCCONACHIE. This home boast plenty of NATURAL LIGHT. When entering this home, you come to a large living room with a FIREPLACE, a dining area and a kitchen with STAINLESS STEEL APPLIANCE and WALKTHROUGH PANTRY. The upper level features a master bedroom with WALK-IN CLOSET and ENSUITE BATHROOM. There are 2 additional large bedrooms and a full bathroom. Enjoy the convenience of UPPER-LEVEL LAUNDRY and an ATTACHED single garage. Enjoy the summer in your private fenced backyard featuring a deck. The basement has plenty of potential awaiting your personal development. This home is close to all amenities including public transportation, shopping, restaurants, schools, parks, etc.

Built in 2020

Essential Information

| | |
|----------------|-----------|
| MLS® # | E4441439 |
| Price | \$459,900 |
| Bedrooms | 3 |
| Bathrooms | 2.50 |
| Full Baths | 2 |
| Half Baths | 1 |
| Square Footage | 1,506 |



| | |
|------------|---------------|
| Acres | 0.00 |
| Year Built | 2020 |
| Type | Single Family |
| Sub-Type | Half Duplex |
| Style | 2 Storey |
| Status | Active |

Community Information

| | |
|-------------|------------------|
| Address | 6525 167b Avenue |
| Area | Edmonton |
| Subdivision | McConachie Area |
| City | Edmonton |
| County | ALBERTA |
| Province | AB |
| Postal Code | T5Y 3X8 |

Amenities

| | |
|-----------|------------------------|
| Amenities | Deck, See Remarks |
| Parking | Single Garage Attached |

Interior

| | |
|-------------------|--|
| Interior Features | ensuite bathroom |
| Appliances | Dishwasher-Built-In, Dryer, Oven-Microwave, Refrigerator, Stove-Electric, Washer |
| Heating | Forced Air-1, Natural Gas |
| Stories | 2 |
| Has Basement | Yes |
| Basement | Full, Unfinished |

Exterior

| | |
|-------------------|--|
| Exterior | Wood, Vinyl |
| Exterior Features | Fenced, Golf Nearby, Landscaped, Playground Nearby, Public Transportation, Schools, Shopping Nearby, See Remarks |
| Roof | Asphalt Shingles |
| Construction | Wood, Vinyl |
| Foundation | Concrete Perimeter |

Additional Information

| | |
|-------------|-----------------|
| Date Listed | June 10th, 2025 |
|-------------|-----------------|

Days on Market 6
Zoning Zone 03



DATA IS DEEMED RELIABLE BUT IS NOT GUARANTEED ACCURATE BY THE REALTORS® ASSOCIATION OF EDMONTON. COPYRIGHT 2025 BY THE REALTORS® ASSOCIATION OF EDMONTON. ALL RIGHTS RESERVED. Trademarks are owned or controlled by the Canadian Real Estate Association (CREA) and identify real estate professionals who are members of CREA (REALTOR®, REALTORS®) and/or the quality of services they provide (MLS®, Multiple Listing Service®)

Listing information last updated on June 16th, 2025 at 12:47pm MDT