

\$590,000 - 213 55101 Ste. Anne Trail, Rural Lac Ste. Anne County

MLS® #E4440782

\$590,000

4 Bedroom, 3.00 Bathroom, 1,323 sqft

Rural on 0.17 Acres

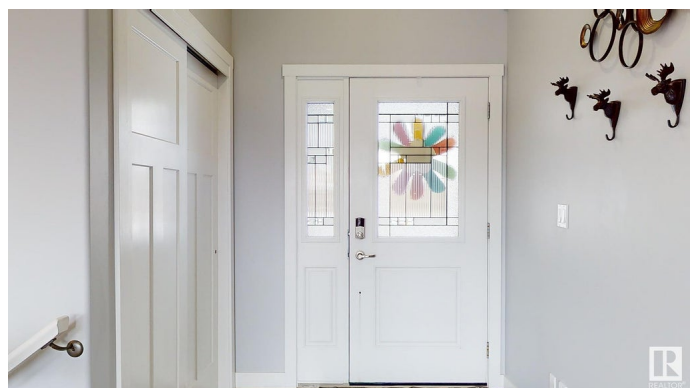
Estates At Waters Edge, Rural Lac Ste. Anne County, AB

WELCOME to this GORGEOUS RAISED BUNGALOW that is located IN THE GATED COMMUNITY, THE ESTATES OF WATERS EDGE!!! This home offers 4 bedrooms, 3 full bathrooms, an OPEN CONCEPT floor plan, a covered & screened in deck with LAKE VIEW, 10 ft ceilings, granite counters, beautiful neutral cabinetry, gas fireplace and luxury vinyl plank flooring. FRONT ATTACHED GARAGE IS OVERSIZED. THE LOWER LEVEL IS COMPLETELY FINISHED with LARGE BRIGHT WINDOWS, an ABUNDANCE OF ENTERTAINING SPACE that is all finished to the same CRAFTSMAN SPEC FINISHES as the upper level. Waters Edge provides a resort style environment with a private pool, clubhouse, playground, boat launch and gym. Commuting to Edmonton, St. Albert, Spruce Grove or Stony Plain is a breeze!

Built in 2018

Essential Information

MLS® #	E4440782
Price	\$590,000
Bedrooms	4
Bathrooms	3.00



Full Baths	3
Square Footage	1,323
Acres	0.17
Year Built	2018
Type	Rural
Sub-Type	Detached Single Family
Style	Raised Bungalow
Status	Active

Community Information

Address	213 55101 Ste. Anne Trail
Area	Rural Lac Ste. Anne County
Subdivision	Estates At Waters Edge
City	Rural Lac Ste. Anne County
County	ALBERTA
Province	AB
Postal Code	T0E 0L0

Amenities

Features	Carbon Monoxide Detectors, Ceiling 10 ft., Club House, Deck, Detectors Smoke, Exterior Walls- 2"x6", Front Porch, Lake Privileges, No Animal Home, No Smoking Home, Pool-Outdoor, Social Rooms, Vinyl Windows, HRV System, Natural Gas BBQ Hookup
----------	---

Interior

Interior Features	ensuite bathroom
Heating	Forced Air-2, Natural Gas
Fireplace	Yes
Stories	2
Has Basement	Yes
Basement	Full, Finished

Exterior

Exterior	Wood
Exterior Features	Beach Access, Boating, Flat Site, Gated Community, Lake Access Property, Lake View, Landscaped, Level Land, Low Maintenance Landscape, Playground Nearby, Private Fishing, Private Setting, Public Swimming Pool, Schools, See Remarks
Construction	Wood
Foundation	Concrete Perimeter

Additional Information

Date Listed	June 6th, 2025
Days on Market	81
Zoning	Zone 71
Condo Fee	\$236

DATA IS DEEMED RELIABLE BUT IS NOT GUARANTEED ACCURATE BY THE REALTORS® ASSOCIATION OF EDMONTON. COPYRIGHT 2025 BY THE REALTORS® ASSOCIATION OF EDMONTON. ALL RIGHTS RESERVED.Trademarks are owned or controlled by the Canadian Real Estate Association (CREA) and identify real estate professionals who are members of CREA (REALTOR®, REALTORS®) and/or the quality of services they provide (MLS®, Multiple Listing Service®)

Listing information last updated on August 26th, 2025 at 9:47am MDT