

Courtesy Of Carlos Lundy Of Exp Realty

\$109,900 - 202 9725 82 Avenue, Edmonton

MLS® #E4440204

\$109,900

1 Bedroom, 1.00 Bathroom, 583 sqft
Condo / Townhouse on 0.00 Acres

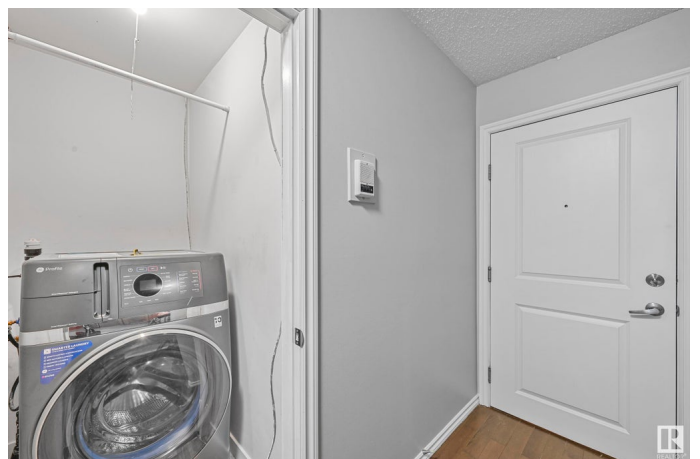
Ritchie, Edmonton, AB

Ideal for students, parents, or investors. This 1-bedroom condo is just minutes from the U of A and steps from Whyte Ave. The unit features hardwood flooring throughout the main areas, cozy carpet in the bedroom, and tile in the upgraded 4-piece bathroom. The kitchen is equipped with a black stove and dishwasher, stainless steel fridge, and a microwave hood fan. Perfect for easy everyday living. Enjoy the convenience of in-suite laundry and the bonus of condo fees that include heat and water. The living area is bright and welcoming, offering a great space to study or relax. Located in Old Strathcona, you're surrounded by parks, cafés, shops, and transit. Whether you're buying for a student or seeking a solid rental in one of Edmonton's most vibrant neighbourhoods, this unit delivers comfort, location, and value.

Built in 1969

Essential Information

| | |
|----------------|-----------|
| MLS® # | E4440204 |
| Price | \$109,900 |
| Bedrooms | 1 |
| Bathrooms | 1.00 |
| Full Baths | 1 |
| Square Footage | 583 |
| Acres | 0.00 |



| | |
|------------|------------------------|
| Year Built | 1969 |
| Type | Condo / Townhouse |
| Sub-Type | Lowrise Apartment |
| Style | Single Level Apartment |
| Status | Active |

Community Information

| | |
|-------------|--------------------|
| Address | 202 9725 82 Avenue |
| Area | Edmonton |
| Subdivision | Ritchie |
| City | Edmonton |
| County | ALBERTA |
| Province | AB |
| Postal Code | T6E 1Y6 |

Amenities

| | |
|-----------|---|
| Amenities | Off Street Parking, Closet Organizers, Detectors Smoke, Intercom, No Animal Home, No Smoking Home |
| Parking | Rear Drive Access, Stall |

Interior

| | |
|--------------|--|
| Appliances | Dishwasher-Built-In, Euro Washer/Dryer Combo, Microwave Hood Fan, Refrigerator, Stove-Electric |
| Heating | Baseboard, Natural Gas |
| # of Stories | 3 |
| Stories | 1 |
| Has Basement | Yes |
| Basement | None, No Basement |

Exterior

| | |
|-------------------|--|
| Exterior | Wood, Vinyl |
| Exterior Features | Back Lane, Flat Site, Landscaped, Paved Lane, View City, See Remarks |
| Roof | EPDM Membrane |
| Construction | Wood, Vinyl |
| Foundation | Concrete Perimeter |

Additional Information

| | |
|----------------|----------------|
| Date Listed | June 4th, 2025 |
| Days on Market | 13 |

| | |
|-----------|---------|
| Zoning | Zone 17 |
| Condo Fee | \$538 |

DATA IS DEEMED RELIABLE BUT IS NOT GUARANTEED ACCURATE BY THE REALTORS® ASSOCIATION OF EDMONTON. COPYRIGHT 2025 BY THE REALTORS® ASSOCIATION OF EDMONTON. ALL RIGHTS RESERVED. Trademarks are owned or controlled by the Canadian Real Estate Association (CREA) and identify real estate professionals who are members of CREA (REALTOR®, REALTORS®) and/or the quality of services they provide (MLS®, Multiple Listing Service®)

Listing information last updated on June 17th, 2025 at 7:17am MDT