

# \$949,900 - 26413 Twp Rd 540, Rural Sturgeon County

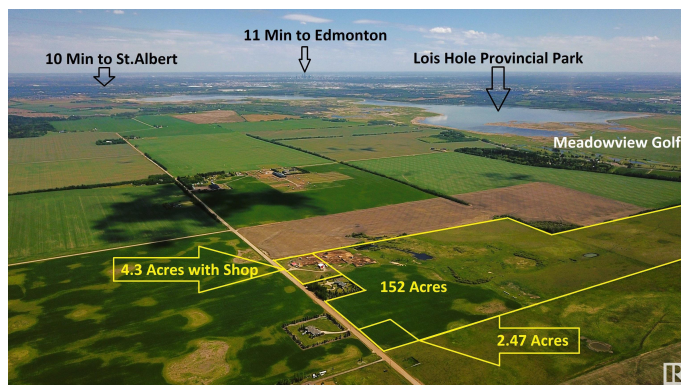
MLS® #E4439614

**\$949,900**

0 Bedroom, 0.00 Bathroom,  
Rural on 152.70 Acres

None, Rural Sturgeon County, AB

152 ACRE FARM OPPORTUNITY - Ideally located at the TOP OF THE HILL just 10 MIN FROM ST.ALBERT, Edmonton or Spruce Grove. BUILD YOUR DREAM HOME with views to the South, add a Barn, Shop, SECOND RESIDENCE, all are permitted under the zoning. Power and Gas at the road and LESS THAN 1KM OF GRAVEL. Great opportunity to get into the country and still be close to town. BUSSING TO SCHOOL IN ST.ALBERT K-9, 86 ACRES OF HIGH PRODUCING SOIL, seeded to pasture and hay and suitable for grains. Cross fenced and SET UP FOR HORSES with multiple ponds.



## Essential Information

MLS® #	E4439614
Price	\$949,900
Bathrooms	0.00
Acres	152.70
Type	Rural
Sub-Type	Vacant Lot/Land
Status	Active

## Community Information

Address	26413 Twp Rd 540
Area	Rural Sturgeon County
Subdivision	None

City	Rural Sturgeon County
County	ALBERTA
Province	AB
Postal Code	T8T 1K6

### Exterior

Exterior Features    Airport Nearby, Cross Fenced, Golf Nearby, Rolling Land, See Remarks

### Additional Information

Date Listed	May 30th, 2025
Days on Market	21
Zoning	Zone 70

DATA IS DEEMED RELIABLE BUT IS NOT GUARANTEED ACCURATE BY THE REALTORS® ASSOCIATION OF EDMONTON. COPYRIGHT 2025 BY THE REALTORS® ASSOCIATION OF EDMONTON. ALL RIGHTS RESERVED. Trademarks are owned or controlled by the Canadian Real Estate Association (CREA) and identify real estate professionals who are members of CREA (REALTOR®, REALTORS®) and/or the quality of services they provide (MLS®, Multiple Listing Service®)

Listing information last updated on June 20th, 2025 at 6:32pm MDT