

\$748,000 - 10205 137 Street, Edmonton

MLS® #E4438823

\$748,000

3 Bedroom, 3.00 Bathroom, 2,468 sqft

Single Family on 0.00 Acres

Glenora, Edmonton, AB

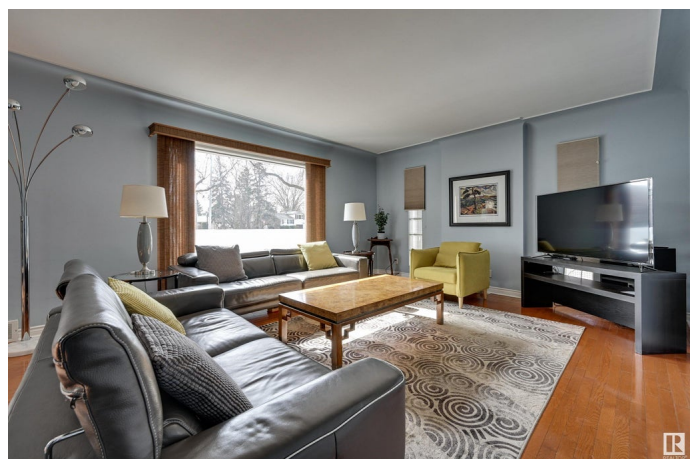
PRICED JUST REDUCED \$50,000 Nestled in the coveted neighborhood of Glenora, this inviting 2-storey home effortlessly combines classic charm with modern upgrades. With energy-efficient TRIPLE PANE windows, this bright and airy residence floods with natural light year-round, creating a peaceful and welcoming atmosphere. Step inside to discover gleaming hardwood floors throughout, leading to a spacious, updated kitchen, featuring contemporary appliances, sleek cabinetry, and elegant countertops, it's perfect for both everyday meals and entertaining guests. Upstairs, you'll find generously-sized bedrooms, each with large windows that bathe the rooms in sunshine and provide a tranquil retreat. Take your relaxation outdoors to the private rooftop deck, an ideal spot for sipping your morning coffee or unwinding in the evening. The fully fenced backyard is a gardener's oasis, with mature plantings and plenty of space for outdoor activities. Recent upgrades include 3 zoned furnace system (2019), driveway (2017).

Built in 1949

Essential Information

MLS® # E4438823

Price \$748,000



Bedrooms	3
Bathrooms	3.00
Full Baths	2
Half Baths	2
Square Footage	2,468
Acres	0.00
Year Built	1949
Type	Single Family
Sub-Type	Detached Single Family
Style	2 Storey
Status	Active

Community Information

Address	10205 137 Street
Area	Edmonton
Subdivision	Glenora
City	Edmonton
County	ALBERTA
Province	AB
Postal Code	T5N 2G8

Amenities

Amenities	Deck, Hot Tub, No Smoking Home, Rooftop Deck/Patio
Parking	Double Garage Attached

Interior

Interior Features	ensuite bathroom
Appliances	Dishwasher-Built-In, Dryer, Garage Opener, Stove-Gas, Washer, Wine/Beverage Cooler, Refrigerators-Two
Heating	Forced Air-1, Natural Gas
Stories	3
Has Basement	Yes
Basement	Full, Finished

Exterior

Exterior	Wood, Vinyl
Exterior Features	Back Lane, Fenced, Flat Site, Fruit Trees/Shrubs, Landscaped, Playground Nearby, Schools, Shopping Nearby
Roof	Asphalt Shingles, EPDM Membrane

Construction	Wood, Vinyl
Foundation	Concrete Perimeter

Additional Information

Date Listed	May 28th, 2025
Days on Market	19
Zoning	Zone 11

DATA IS DEEMED RELIABLE BUT IS NOT GUARANTEED ACCURATE BY THE REALTORS® ASSOCIATION OF EDMONTON. COPYRIGHT 2025 BY THE REALTORS® ASSOCIATION OF EDMONTON. ALL RIGHTS RESERVED.Trademarks are owned or controlled by the Canadian Real Estate Association (CREA) and identify real estate professionals who are members of CREA (REALTOR®, REALTORS®) and/or the quality of services they provide (MLS®, Multiple Listing Service®)

Listing information last updated on June 16th, 2025 at 6:32am MDT