

# **\$524,900 - 55121 Range Road 32, Rural Lac Ste. Anne County**

MLS® #E4437441

**\$524,900**

2 Bedroom, 1.00 Bathroom, 1,368 sqft

Rural on 40.28 Acres

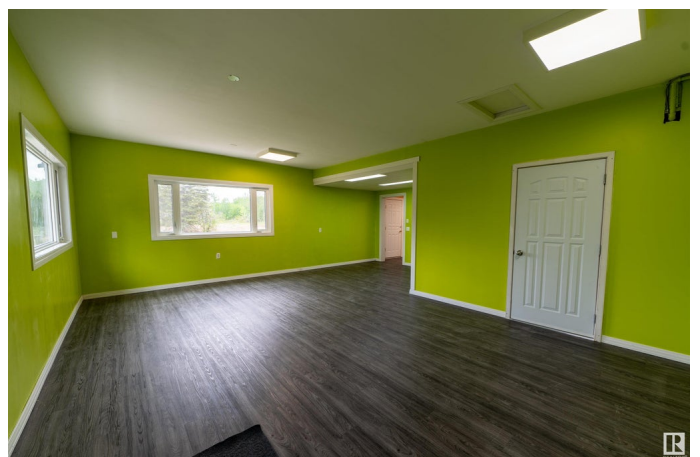
Lac Ste Anne, Rural Lac Ste. Anne County, AB

Charming country living on a private, treed 40-acre parcel in Lac Ste. Anne County. This 1.5-storey detached home offers a spacious and functional layout with 2 bedroom and 1 bath. A warm and welcoming interior features vinyl plank flooring and vinyl windows, complemented by in-floor heating and natural gas. Enjoy the serenity of nature from your fenced yard or entertain on the expansive grounds with mature trees and a private setting. Built with 2"x6" exterior walls, the home offers durability and energy efficiency. Additional features include a single attached garage, drilled well, open discharge sewer, and metal roof. Located just minutes from Onoway and with easy access via gravel road, this property combines rural peace with nearby amenities. A unique opportunity to own a sizeable parcel in a scenic, tranquil location. Immediate possession available.

Built in 2009

## **Essential Information**

MLS® #	E4437441
Price	\$524,900
Bedrooms	2
Bathrooms	1.00



Full Baths	1
Square Footage	1,368
Acres	40.28
Year Built	2009
Type	Rural
Sub-Type	Detached Single Family
Style	1 and Half Storey
Status	Active

### Community Information

Address	55121 Range Road 32
Area	Rural Lac Ste. Anne County
Subdivision	Lac Ste Anne
City	Rural Lac Ste. Anne County
County	ALBERTA
Province	AB
Postal Code	T0E 1A0

### Amenities

Features	Exterior Walls- 2"x6", No Animal Home, No Smoking Home, Vinyl Windows, See Remarks
----------	--

### Interior

Heating	In Floor Heat System, Natural Gas
Stories	2
Has Basement	Yes
Basement	None, No Basement

### Exterior

Exterior	Wood
Exterior Features	Fenced, Private Setting, Treed Lot, See Remarks
Construction	Wood
Foundation	Concrete Perimeter

### Additional Information

Date Listed	May 20th, 2025
Days on Market	38
Zoning	Zone 71

DATA IS DEEMED RELIABLE BUT IS NOT GUARANTEED ACCURATE BY THE REALTORS® ASSOCIATION OF

EDMONTON. COPYRIGHT 2025 BY THE REALTORS® ASSOCIATION OF EDMONTON. ALL RIGHTS RESERVED.Trademarks are owned or controlled by the Canadian Real Estate Association (CREA) and identify real estate professionals who are members of CREA (REALTOR®, REALTORS®) and/or the quality of services they provide (MLS®, Multiple Listing Service®)

Listing information last updated on June 27th, 2025 at 1:32am MDT