

\$484,900 - 18409 62b Avenue, Edmonton

MLS® #E4436814

\$484,900

5 Bedroom, 2.50 Bathroom, 1,804 sqft

Single Family on 0.00 Acres

Ormsby Place, Edmonton, AB

Nice home, looking for a new family! Rare find with large pie lot (almost 700 sq.M), lots of family space (5 bedrooms, 3 bathrooms, family room and living room), all levels finished, incredible storage (lighted crawl space under family room level - clean storage!), updated kitchen (gas range, huge fridge, quality dishwasher (all stainless steel), updated bathrooms, garage entrance on the lower level (privacy for older child or parent?), over-sized garage (big trucks welcome!), flexible basement rooms (bedrooms, home-gym, office, craft room?), updated mechanical (newer central A/C, 5 year old hi-efficiency furnace, 10 year old shingles, , all newer appliances), convenient location (Ormsby Elementary School just 2 blocks, Henay is 2 minutes away, Whitemud is about 5), shopping (Callingwood Marketplace, Hawkstone, Costco), restaurants & entertainment (Vivo, Sorrentinos, Franco's, Farmer's Market, and WEM). This is the place and you can make it yours! Come see!

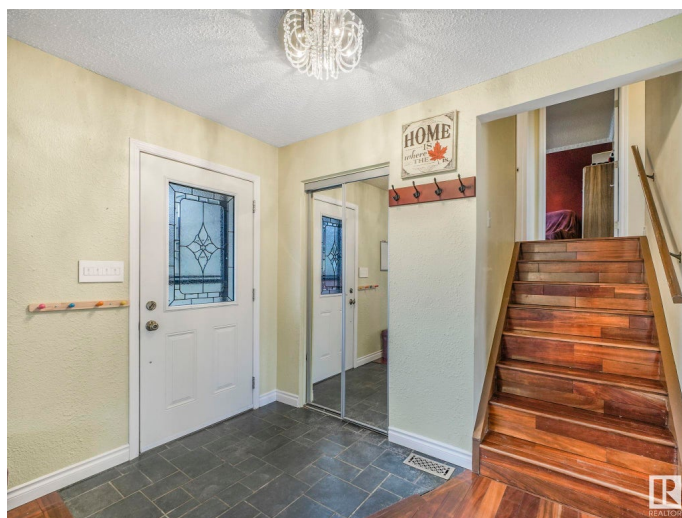
Built in 1978

Essential Information

MLS® # E4436814

Price \$484,900

Bedrooms 5



Bathrooms	2.50
Full Baths	2
Half Baths	1
Square Footage	1,804
Acres	0.00
Year Built	1978
Type	Single Family
Sub-Type	Detached Single Family
Style	4 Level Split
Status	Active

Community Information

Address	18409 62b Avenue
Area	Edmonton
Subdivision	Ormsby Place
City	Edmonton
County	ALBERTA
Province	AB
Postal Code	T5T 2S9

Amenities

Amenities	Air Conditioner, Crawl Space, Deck, Hot Water Natural Gas, No Smoking Home, Vinyl Windows
Parking Spaces	4
Parking	Double Garage Attached, Over Sized

Interior

Interior Features	ensuite bathroom
Appliances	Air Conditioning-Central, Dishwasher-Built-In, Fan-Ceiling, Garage Control, Garage Opener, Microwave Hood Fan, Refrigerator, Stacked Washer/Dryer, Stove-Gas, Window Coverings
Heating	Forced Air-1, Natural Gas
Fireplace	Yes
Fireplaces	Insert
Stories	4
Has Basement	Yes
Basement	Full, Finished

Exterior

Exterior	Wood, Brick, Metal
Exterior Features	Fenced, No Back Lane, No Through Road, Playground Nearby, Public Transportation, Schools, Shopping Nearby
Lot Description	BACK 29.3
Roof	Asphalt Shingles
Construction	Wood, Brick, Metal
Foundation	Concrete Perimeter

School Information

Elementary	St.Martha/Ormsby
Middle	H E Beriault/s.Bruce Smith
High	Romero/JP

Additional Information

Date Listed	May 16th, 2025
Days on Market	7
Zoning	Zone 20

DATA IS DEEMED RELIABLE BUT IS NOT GUARANTEED ACCURATE BY THE REALTORS® ASSOCIATION OF EDMONTON. COPYRIGHT 2025 BY THE REALTORS® ASSOCIATION OF EDMONTON. ALL RIGHTS RESERVED.Trademarks are owned or controlled by the Canadian Real Estate Association (CREA) and identify real estate professionals who are members of CREA (REALTOR®, REALTORS®) and/or the quality of services they provide (MLS®, Multiple Listing Service®)

Listing information last updated on May 22nd, 2025 at 11:32pm MDT