

\$764,800 - 61 Hull Wynd, Spruce Grove

MLS® #E4435642

\$764,800

5 Bedroom, 3.00 Bathroom, 2,536 sqft

Single Family on 0.00 Acres

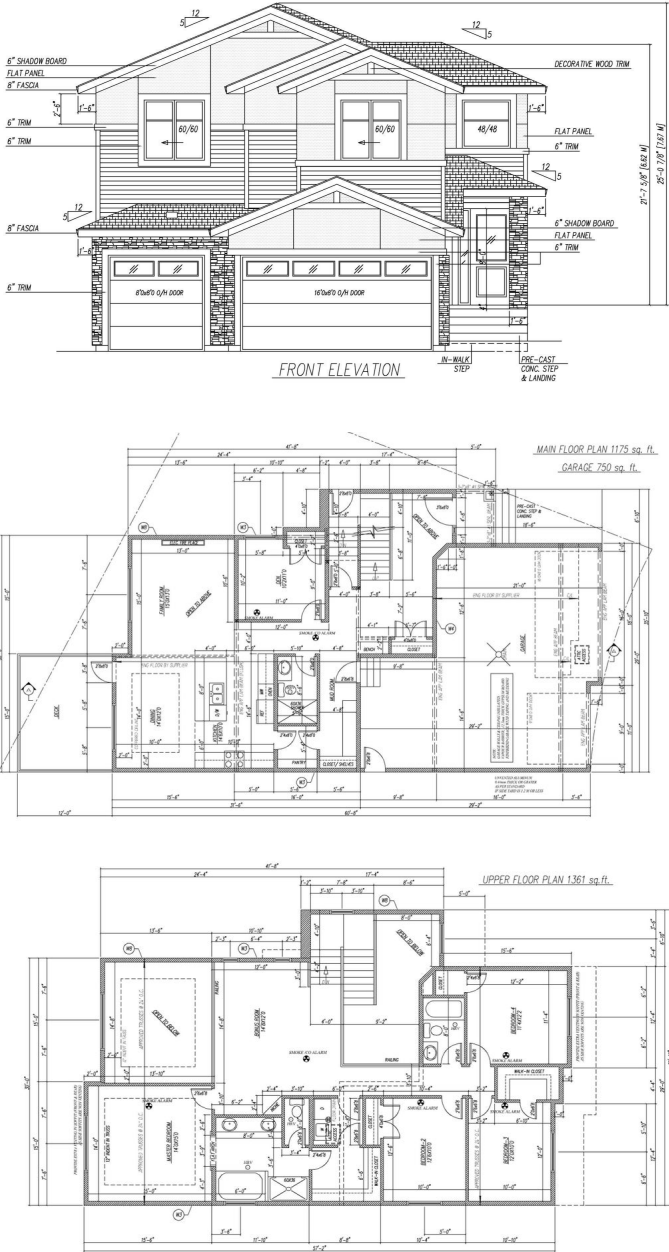
Hilldowns, Spruce Grove, AB

Welcome to this beautifully designed home in the family-friendly community of Hilldowns, Spruce Grove! This spacious property offers exceptional functionality with a MAIN floor bedroom and a FULL bathroom. The heart of the home features an open-to-above living room with a feature wall and electric fireplace, the huge kitchen comes with custom cabinetry and over sized island with quartz countertops. Upstairs, enjoy a generous bonus room. The luxurious primary suite includes a 5-piece ensuite with a walk-in closet. Three additional well-sized bedrooms and bathroom complete the upper level. Basement offers a separate side entrance awaiting your personal touch making it a great income potential.. An oversized TRIPLE car garage. Premium lighting package, custom showers, MDF shelving, three gas lines, feature walls, two-tone cabinets and coffered ceilings. Located close to parks, schools, shopping and commuter routes. *Photos are of a similar home constructed by the same Builder. Finishes may vary.

Built in 2025

Essential Information

MLS® #	E4435642
Price	\$764,800



Bedrooms	5
Bathrooms	3.00
Full Baths	3
Square Footage	2,536
Acres	0.00
Year Built	2025
Type	Single Family
Sub-Type	Detached Single Family
Style	2 Storey
Status	Active

Community Information

Address	61 Hull Wynd
Area	Spruce Grove
Subdivision	Hilldowns
City	Spruce Grove
County	ALBERTA
Province	AB
Postal Code	T7X 0X5

Amenities

Amenities	Ceiling 10 ft., Ceiling 9 ft.
Parking Spaces	6
Parking	Double Garage Attached, Triple Garage Attached

Interior

Interior Features	ensuite bathroom
Appliances	Garage Control, Garage Opener, Hood Fan
Heating	Forced Air-1, Natural Gas
Fireplace	Yes
Fireplaces	Wall Mount
Stories	2
Has Basement	Yes
Basement	Full, Unfinished

Exterior

Exterior	Wood, Vinyl
Exterior Features	Airport Nearby, Cul-De-Sac, Fenced, Golf Nearby, Level Land, Playground Nearby, Public Transportation, Schools, Shopping Nearby

Roof	Asphalt Shingles
Construction	Wood, Vinyl
Foundation	Concrete Perimeter

Additional Information

Date Listed	May 9th, 2025
Days on Market	16
Zoning	Zone 91

DATA IS DEEMED RELIABLE BUT IS NOT GUARANTEED ACCURATE BY THE REALTORS® ASSOCIATION OF EDMONTON. COPYRIGHT 2025 BY THE REALTORS® ASSOCIATION OF EDMONTON. ALL RIGHTS RESERVED.Trademarks are owned or controlled by the Canadian Real Estate Association (CREA) and identify real estate professionals who are members of CREA (REALTOR®, REALTORS®) and/or the quality of services they provide (MLS®, Multiple Listing Service®)

Listing information last updated on May 25th, 2025 at 3:02pm MDT