

\$229,900 - 240 1520 Hammond Gate, Edmonton

MLS® #E4435641

\$229,900

2 Bedroom, 2.00 Bathroom, 861 sqft

Condo / Townhouse on 0.00 Acres

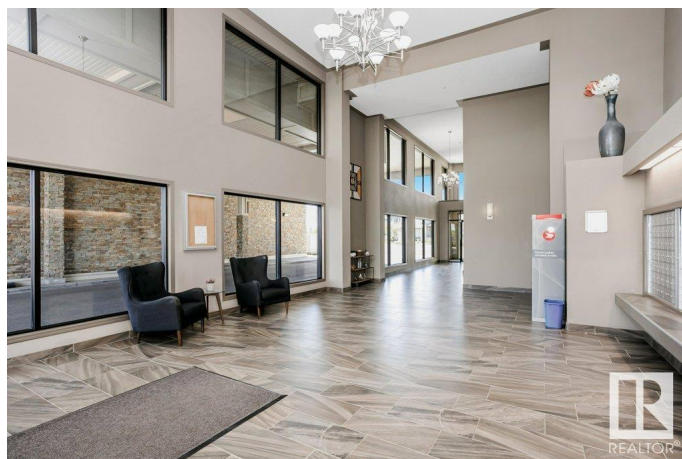
The Hamptons, Edmonton, AB

Best in VALUE and CLASS...includes TANDEM UNDERGROUND PARKING! Great value in this well-kept 2 bed, 2 bath condo in the west end - The Hamptons. With nearly 870 sq ft, this unit features a functional kitchen with espresso cabinets, stainless appliances, and a centre island. The primary bedroom includes a walk-through closet and 4-piece ensuite. A second full bath, in-suite laundry/storage, and IN-FLOOR HEATING add to the comfort. Enjoy sunsets from the West/NW-facing balcony and host gatherings in the social room. BONUS: titled underground TANDEM PARKING for two vehicles. Best of all, it's the lowest-priced unit in the building, LISTED \$45,000 BELOW NEXT COMPARABLE IN THE BUILDING. Conveniently located near schools, shopping, transit, and the Anthony Henday.

Built in 2008

Essential Information

MLS® #	E4435641
Price	\$229,900
Bedrooms	2
Bathrooms	2.00
Full Baths	2
Square Footage	861
Acres	0.00



Year Built	2008
Type	Condo / Townhouse
Sub-Type	Lowrise Apartment
Style	Single Level Apartment
Status	Active

Community Information

Address	240 1520 Hammond Gate
Area	Edmonton
Subdivision	The Hamptons
City	Edmonton
County	ALBERTA
Province	AB
Postal Code	T6M 0J4

Amenities

Amenities	No Smoking Home, Parking-Visitor
Parking Spaces	2
Parking	Tandem, Underground

Interior

Interior Features	ensuite bathroom
Appliances	Dishwasher-Built-In, Microwave Hood Fan, Refrigerator, Stacked Washer/Dryer, Stove-Electric, Window Coverings
Heating	In Floor Heat System, Natural Gas
# of Stories	4
Stories	1
Has Basement	Yes
Basement	None, No Basement

Exterior

Exterior	Wood, Stone, Vinyl
Exterior Features	No Back Lane, Public Transportation, Schools, Shopping Nearby
Roof	Asphalt Shingles
Construction	Wood, Stone, Vinyl
Foundation	Concrete Perimeter

School Information

Elementary	Bessie Nichols
------------	----------------

Middle	Bessie Nichols
High	Jasper Place

Additional Information

Date Listed	May 9th, 2025
Days on Market	16
Zoning	Zone 58
Condo Fee	\$507

DATA IS DEEMED RELIABLE BUT IS NOT GUARANTEED ACCURATE BY THE REALTORS® ASSOCIATION OF EDMONTON. COPYRIGHT 2025 BY THE REALTORS® ASSOCIATION OF EDMONTON. ALL RIGHTS RESERVED. Trademarks are owned or controlled by the Canadian Real Estate Association (CREA) and identify real estate professionals who are members of CREA (REALTOR®, REALTORS®) and/or the quality of services they provide (MLS®, Multiple Listing Service®)

Listing information last updated on May 25th, 2025 at 1:17pm MDT