

\$415,000 - 11410 14 Avenue, Edmonton

MLS® #E4435429

\$415,000

3 Bedroom, 2.50 Bathroom, 1,317 sqft
Single Family on 0.00 Acres

Rutherford (Edmonton), Edmonton, AB

Discover this beautiful landscaped and spacious 3-bedroom 2.5 bath, one single attached garage half duplex, located in the desirable Rutherford neighborhood. No condo fees. The open main floor boasts with a large living room with gas fireplace, an island kitchen with tons of designer cabinets and walk-in pantry, a bright dining room with glass patio doors leads to a large deck and private fully fenced backyard. Hardwood flooring thru-out this level. Moving upstairs, you will find a spacious master bedroom with a 3-piece ensuite, two additional bedrooms, and a 4-piece main bathroom, completing the upper floor. Enjoy the convenience of the location just a few minutes' walk from schools, YMCA daycare, parks, bus stops, restaurants, and community shopping centers. Easy access to the Anthony Henday Freeway, Century Park Transit Center (Bus & LRT station), and South Common.

Built in 2010

Essential Information

MLS® #	E4435429
Price	\$415,000
Bedrooms	3
Bathrooms	2.50
Full Baths	2



Half Baths	1
Square Footage	1,317
Acres	0.00
Year Built	2010
Type	Single Family
Sub-Type	Half Duplex
Style	2 Storey
Status	Active

Community Information

Address	11410 14 Avenue
Area	Edmonton
Subdivision	Rutherford (Edmonton)
City	Edmonton
County	ALBERTA
Province	AB
Postal Code	T6W 0N5

Amenities

Amenities	Deck
Parking	Single Garage Attached

Interior

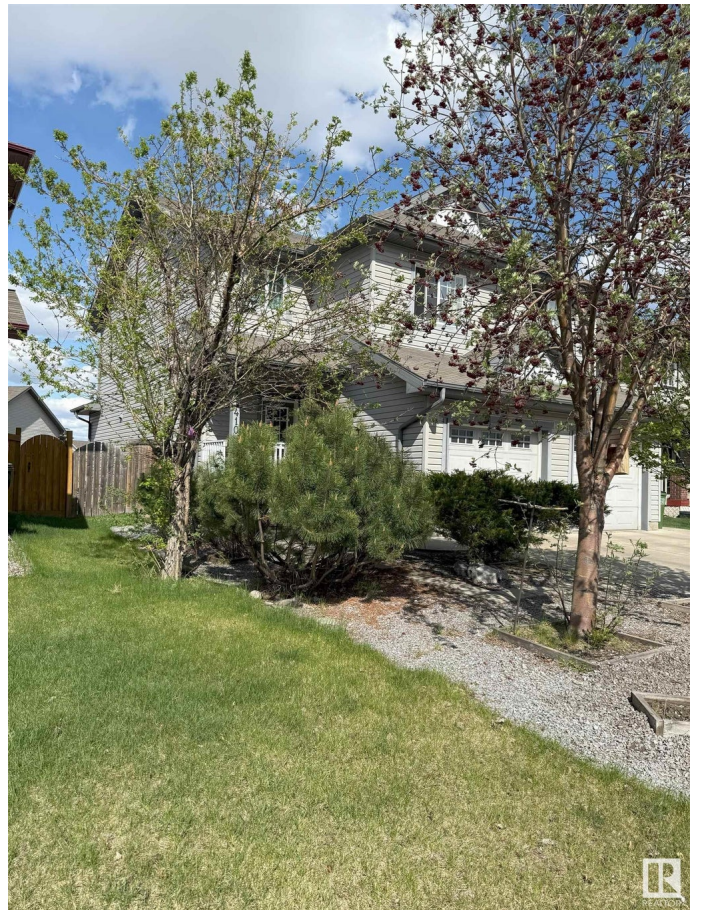
Interior Features	ensuite bathroom
Appliances	Dishwasher-Built-In, Dryer, Refrigerator, Stove-Electric, Washer
Heating	Forced Air-1, Natural Gas
Fireplace	Yes
Fireplaces	Tile Surround
Stories	2
Has Basement	Yes
Basement	Full, Unfinished

Exterior

Exterior	Wood, Vinyl
Exterior Features	Airport Nearby, Fenced, Landscaped, Park/Reserve, Playground Nearby, Public Transportation, Schools, Shopping Nearby
Roof	Asphalt Shingles
Construction	Wood, Vinyl
Foundation	Concrete Perimeter

Additional Information

Date Listed	May 9th, 2025
Days on Market	16
Zoning	Zone 55



DATA IS DEEMED RELIABLE BUT IS NOT GUARANTEED ACCURATE BY THE REALTORS® ASSOCIATION OF EDMONTON. COPYRIGHT 2025 BY THE REALTORS® ASSOCIATION OF EDMONTON. ALL RIGHTS RESERVED. Trademarks are owned or controlled by the Canadian Real Estate Association (CREA) and identify real estate professionals who are members of CREA (REALTOR®, REALTORS®) and/or the quality of services they provide (MLS®, Multiple Listing Service®)

Listing information last updated on May 25th, 2025 at 1:02am MDT