

# \$134,900 - 310 5065 31 Avenue, Edmonton

MLS® #E4435350

**\$134,900**

1 Bedroom, 1.00 Bathroom, 633 sqft

Condo / Townhouse on 0.00 Acres

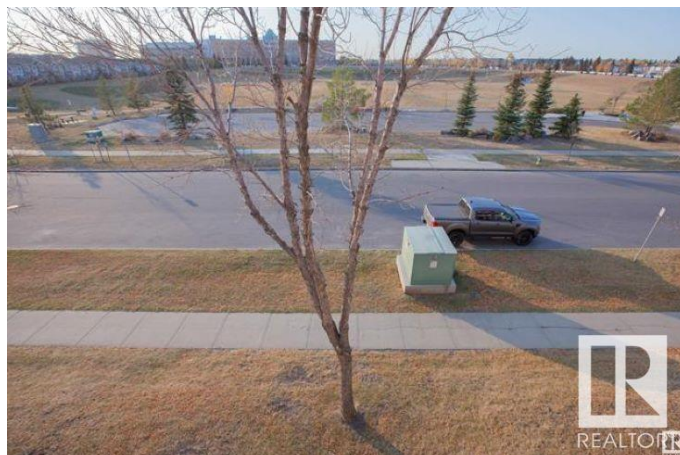
Tawa, Edmonton, AB

VIEW of the PARK - Open Living Room and Dining Room with built-in storage cabinets and a European Style Kitchen, 4pce bath, Spacious Bedroom with ceiling fan and plenty of closet space, convenient In-suite laundry with washer and dryer. Excellent Condition throughout, Easy access to Whitemud and Henday, Close to the Grey Nuns Hospital and Millwoods Main Transit Station and New LRT. Other amenities close by include the Public Library and Seniors Centre plus Plenty of Shopping and Pets are allowed with board approval. EASY to VIEW.

Built in 1992

## Essential Information

MLS® #	E4435350
Price	\$134,900
Bedrooms	1
Bathrooms	1.00
Full Baths	1
Square Footage	633
Acres	0.00
Year Built	1992
Type	Condo / Townhouse
Sub-Type	Lowrise Apartment
Style	Single Level Apartment
Status	Active



## Community Information

Address	310 5065 31 Avenue
Area	Edmonton
Subdivision	Tawa
City	Edmonton
County	ALBERTA
Province	AB
Postal Code	T6L 6S5

## Amenities

Amenities	Intercom, Parking-Visitor, Patio
Parking Spaces	1
Parking	Stall

## Interior

Appliances	Dishwasher-Built-In, Dryer, Refrigerator, Stove-Electric, Washer
Heating	Baseboard, Natural Gas
# of Stories	4
Stories	4
Has Basement	Yes
Basement	None, No Basement

## Exterior

Exterior	Wood, Hardie Board Siding
Exterior Features	Golf Nearby, Playground Nearby, Public Swimming Pool, Public Transportation, Schools, Shopping Nearby
Roof	Asphalt Shingles
Construction	Wood, Hardie Board Siding
Foundation	Concrete Perimeter

## Additional Information

Date Listed	May 8th, 2025
Days on Market	41
Zoning	Zone 29
Condo Fee	\$297

DATA IS DEEMED RELIABLE BUT IS NOT GUARANTEED ACCURATE BY THE REALTORS® ASSOCIATION OF EDMONTON. COPYRIGHT 2025 BY THE REALTORS® ASSOCIATION OF EDMONTON. ALL RIGHTS RESERVED. Trademarks are owned or controlled by the Canadian Real Estate Association (CREA) and identify real estate professionals who are members of CREA (REALTOR®, REALTORS®) and/or the quality of services they provide (MLS®, Multiple Listing Service®)

Listing information last updated on June 18th, 2025 at 7:33am MDT