

\$399,900 - 28 Labelle Crescent, St. Albert

MLS® #E4435136

\$399,900

5 Bedroom, 2.50 Bathroom, 1,275 sqft

Single Family on 0.00 Acres

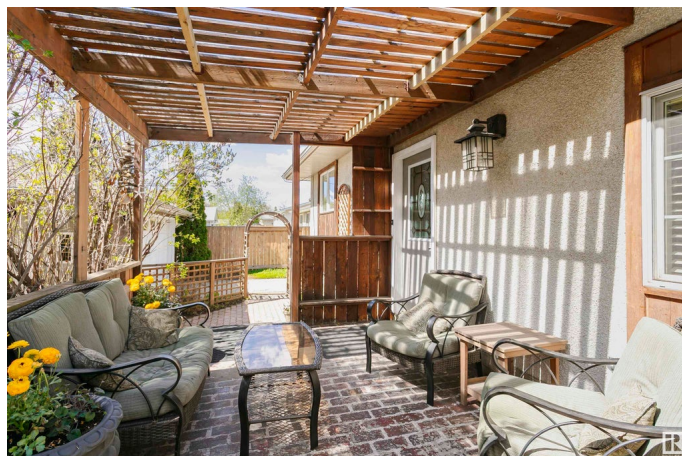
Lacombe Park, St. Albert, AB

Ideal for first-time buyers! This 5-bed, 2.5-bath bungalow in the sought-after neighbourhood of Lacombe Park is full of potential. Just a 5-min walk to Larose Park & schools, and minutes to shopping. The sunny main floor features a bright living room with a bay window for all of your plants, stainless steel kitchen appliances, and a unique sunken dining room with cozy gas fireplace and custom built-ins. The primary bedroom has a private 2-pc ensuite, rare for a 1973 home! Downstairs offers a huge rec room, 2 bedrooms, a large storage room, and a flexible laundry/salon space with plumbing which can easily be converted into a spacious dedicated laundry room. The backyard is private and welcoming with a raised patio, wooden pergola, mature trees, perennials, fire pit, and a playhouse & greenhouse. Insulated double detached garage and plenty of parking on the driveway. Brand new hot water tank and 2018 furnace. A solid home in a fantastic family-friendly location!

Built in 1973

Essential Information

MLS® #	E4435136
Price	\$399,900
Bedrooms	5
Bathrooms	2.50



Full Baths	2
Half Baths	1
Square Footage	1,275
Acres	0.00
Year Built	1973
Type	Single Family
Sub-Type	Detached Single Family
Style	Bungalow
Status	Active

Community Information

Address	28 Labelle Crescent
Area	St. Albert
Subdivision	Lacombe Park
City	St. Albert
County	ALBERTA
Province	AB
Postal Code	T8N 2G5

Amenities

Amenities	On Street Parking, Detectors Smoke, Fire Pit, Hot Water Natural Gas, No Animal Home, No Smoking Home, Parking-Extra, Patio, Vinyl Windows, See Remarks
Parking Spaces	4
Parking	Double Garage Detached, Insulated

Interior

Interior Features	ensuite bathroom
Appliances	Dishwasher-Built-In, Dryer, Garage Control, Garage Opener, Hood Fan, Oven-Microwave, Refrigerator, Stove-Electric, Washer, Window Coverings, See Remarks
Heating	Forced Air-1, Natural Gas
Fireplace	Yes
Fireplaces	Insert
Stories	2
Has Basement	Yes
Basement	Full, Finished

Exterior

Exterior	Wood
Exterior Features	Landscaped, No Back Lane, Playground Nearby, Public Transportation, Schools, Shopping Nearby, Treed Lot, See Remarks, Partially Fenced
Roof	Asphalt Shingles
Construction	Wood
Foundation	Concrete Perimeter

School Information

Elementary	Bertha Kennedy
Middle	William D Cuts
High	Sainte Marguerite

Additional Information

Date Listed	May 8th, 2025
Days on Market	6
Zoning	Zone 24

DATA IS DEEMED RELIABLE BUT IS NOT GUARANTEED ACCURATE BY THE REALTORS® ASSOCIATION OF EDMONTON. COPYRIGHT 2025 BY THE REALTORS® ASSOCIATION OF EDMONTON. ALL RIGHTS RESERVED. Trademarks are owned or controlled by the Canadian Real Estate Association (CREA) and identify real estate professionals who are members of CREA (REALTOR®, REALTORS®) and/or the quality of services they provide (MLS®, Multiple Listing Service®)

Listing information last updated on May 14th, 2025 at 10:32am MDT