

# **\$760,000 - 353 50419 Range Road 203, Rural Beaver County**

MLS® #E4434729

**\$760,000**

3 Bedroom, 2.00 Bathroom, 1,647 sqft

Rural on 3.14 Acres

Beaver Creek Estate, Rural Beaver County, AB

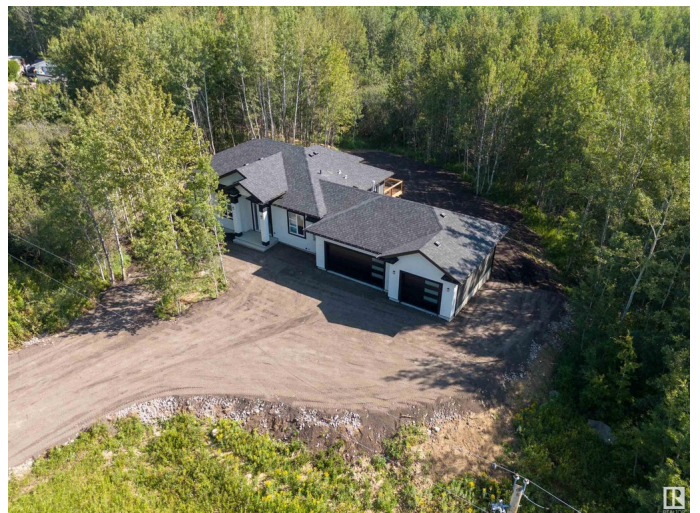
Incredible custom build 2024 bungalow. Welcome to lot 353 in Beaver Creek Estate in Beaver County. This 2024 Bungalow has. 1650 square feet Of the main floor living space and not finish basement for your own design and creative. 3 bedrooms and two baths. The open kitchen has soft closed cabinetry quartz countertops soft vinyl floors and 8 by 4 feet island with single level eating bar. Tile backsplash and the Corner Pantry. Dining nook is open concept with exterior deck access. Living room has a wall mount fireplace. Primary bedroom is a king size with oversized walk-in closet. Ensuite has double sink and shower and a tub. Has two additional main floor bedrooms and a full bath. Garage mudroom is spacious with the main floor laundry. Basement is not finished with the massive output space for your own design. Home has a new home warranty. Three car garage with the 950 square feet heated, insulated and finished. The septic tank plus treatment field and 12 by 25 feet rear deck..

Built in 2024

## **Essential Information**

MLS® #

E4434729



Price	\$760,000
Bedrooms	3
Bathrooms	2.00
Full Baths	2
Square Footage	1,647
Acres	3.14
Year Built	2024
Type	Rural
Sub-Type	Detached Single Family
Style	Bungalow
Status	Active

### Community Information

Address	353 50419 Range Road 203
Area	Rural Beaver County
Subdivision	Beaver Creek Estate
City	Rural Beaver County
County	ALBERTA
Province	AB
Postal Code	T0B 4J2

### Amenities

Features	Ceiling 9 ft., Deck, Detectors Smoke, Exterior Walls- 2"x6", R.V. Storage, Vinyl Windows, Walkout Basement
----------	--

### Interior

Interior Features	ensuite bathroom
Heating	Forced Air-1, Heat Pump, Natural Gas
Fireplace	Yes
Stories	1
Has Basement	Yes
Basement	Full, Unfinished

### Exterior

Exterior	Wood
Exterior Features	Landscaped, Treed Lot
Construction	Wood
Foundation	Concrete Perimeter

### Additional Information

Date Listed May 6th, 2025

Days on Market 19

Zoning Zone 80

DATA IS DEEMED RELIABLE BUT IS NOT GUARANTEED ACCURATE BY THE REALTORS® ASSOCIATION OF EDMONTON. COPYRIGHT 2025 BY THE REALTORS® ASSOCIATION OF EDMONTON. ALL RIGHTS RESERVED. Trademarks are owned or controlled by the Canadian Real Estate Association (CREA) and identify real estate professionals who are members of CREA (REALTOR®, REALTORS®) and/or the quality of services they provide (MLS®, Multiple Listing Service®)

Listing information last updated on May 25th, 2025 at 2:32am MDT