

\$579,888 - 16216 19 Avenue, Edmonton

MLS® #E4434636

\$579,888

4 Bedroom, 3.50 Bathroom, 1,642 sqft

Single Family on 0.00 Acres

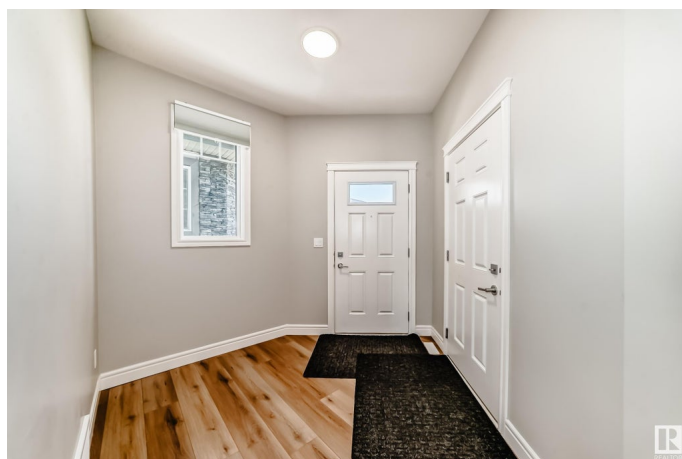
Glenridding Heights, Edmonton, AB

Well-maintained half duplex in desirable Glenridding community, featuring a LEGAL BASEMENT SUITE—ideal for investors or families looking for mortgage help! Enjoy added privacy with no rear neighbors as the home backs onto a walking path. Fully landscaped this property offers a bright, open-concept main floor, spacious upper-level bedrooms, modern stainless steel kitchen appliances, and the comfort of air conditioning. Basement 1 bed/1 bath suite includes stainless steel kitchen appliances and its own washer/dryer for the suite!

Built in 2023

Essential Information

| | |
|----------------|---------------|
| MLS® # | E4434636 |
| Price | \$579,888 |
| Bedrooms | 4 |
| Bathrooms | 3.50 |
| Full Baths | 3 |
| Half Baths | 1 |
| Square Footage | 1,642 |
| Acres | 0.00 |
| Year Built | 2023 |
| Type | Single Family |
| Sub-Type | Half Duplex |
| Style | 2 Storey |



| | |
|--------|--------|
| Status | Active |
|--------|--------|

Community Information

| | |
|-------------|---------------------|
| Address | 16216 19 Avenue |
| Area | Edmonton |
| Subdivision | Glenridding Heights |
| City | Edmonton |
| County | ALBERTA |
| Province | AB |
| Postal Code | T6W 5C6 |

Amenities

| | |
|-----------|------------------------|
| Amenities | Air Conditioner |
| Parking | Double Garage Attached |

Interior

| | |
|-------------------|--|
| Interior Features | ensuite bathroom |
| Appliances | Garage Opener, Dryer-Two, Refrigerators-Two, Stoves-Two, Washers-Two, Dishwasher-Two, Microwave Hood Fan-Two |
| Heating | Forced Air-1, Natural Gas |
| Stories | 3 |
| Has Suite | Yes |
| Has Basement | Yes |
| Basement | Full, Finished |

Exterior

| | |
|-------------------|---|
| Exterior | Wood, Brick, Vinyl |
| Exterior Features | Airport Nearby, Landscaped, No Back Lane, No Through Road, Not Fenced, Playground Nearby, Public Transportation, Shopping Nearby, See Remarks |
| Roof | Asphalt Shingles |
| Construction | Wood, Brick, Vinyl |
| Foundation | Concrete Perimeter |

Additional Information

| | |
|----------------|---------------|
| Date Listed | May 5th, 2025 |
| Days on Market | 4 |
| Zoning | Zone 56 |

DATA IS DEEMED RELIABLE BUT IS NOT GUARANTEED ACCURATE BY THE REALTORS® ASSOCIATION OF EDMONTON. COPYRIGHT 2025 BY THE REALTORS® ASSOCIATION OF EDMONTON. ALL RIGHTS

RESERVED.Trademarks are owned or controlled by the Canadian Real Estate Association (CREA) and identify real estate professionals who are members of CREA (REALTOR®, REALTORS®) and/or the quality of services they provide (MLS®, Multiple Listing Service®)

Listing information last updated on May 9th, 2025 at 2:47pm MDT