

\$359,000 - 205 60118 Scndry 867, Rural St. Paul County

MLS® #E4433164

\$359,000

3 Bedroom, 2.50 Bathroom, 1,507 sqft

Rural on 1.85 Acres

Lower Mann Lake, Rural St. Paul County, AB

1.85 acres on Lower Mann Lake in the County of St. Paul, an absolute perfect place to call home, whether you're retiring or looking for a home for the whole family, this is the one! Features a main floor primary bedroom with views of the lake and an ensuite. The additional family room right outside the primary bedroom is a great space you could convert to a home office, play area or even a future bedroom. Get home and enjoy the smell of birch burning in the fireplace, original light fixtures and cedar interior left to maintain the character and charm, let your hands sit in suds while doing dishes and gazing outside at the lake. This lovely kitchen is bright, has plenty of cabinets and counter space and a door conveniently heading out to the deck for BBQ's and company. Services include a well, 100amp power, gas furnace and a septic and field. Also features a large outbuilding and single garage. Upgrades include new shingles, flooring, 3 renovated washrooms, washer/dryer and water conditioner.

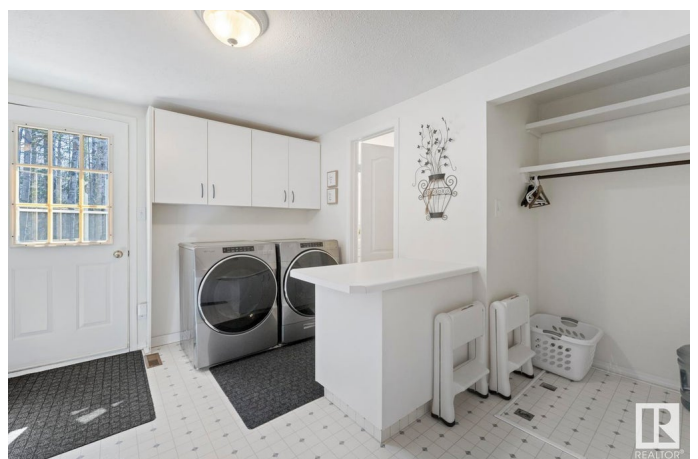
Built in 1980

Essential Information

MLS® # E4433164

Price \$359,000

Bedrooms 3



Bathrooms	2.50
Full Baths	2
Half Baths	1
Square Footage	1,507
Acres	1.85
Year Built	1980
Type	Rural
Sub-Type	Detached Single Family
Style	Bungalow
Status	Active

Community Information

Address	205 60118 Scndry 867
Area	Rural St. Paul County
Subdivision	Lower Mann Lake
City	Rural St. Paul County
County	ALBERTA
Province	AB
Postal Code	T0A 0C0

Amenities

Features	Crawl Space, Deck, Detectors Smoke, R.V. Storage, Vaulted Ceiling
----------	---

Interior

Interior Features	ensuite bathroom
Heating	Forced Air-1, Natural Gas
Fireplace	Yes
Stories	2
Has Basement	Yes
Basement	None, No Basement

Exterior

Exterior	Wood
Exterior Features	Lake View, Not Fenced, Schools, Treed Lot, Waterfront Property
Construction	Wood
Foundation	Concrete Perimeter

Additional Information

Date Listed	April 28th, 2025
-------------	------------------

Days on Market 2

Zoning Zone 60

DATA IS DEEMED RELIABLE BUT IS NOT GUARANTEED ACCURATE BY THE REALTORS® ASSOCIATION OF EDMONTON. COPYRIGHT 2025 BY THE REALTORS® ASSOCIATION OF EDMONTON. ALL RIGHTS RESERVED. Trademarks are owned or controlled by the Canadian Real Estate Association (CREA) and identify real estate professionals who are members of CREA (REALTOR®, REALTORS®) and/or the quality of services they provide (MLS®, Multiple Listing Service®)

Listing information last updated on April 30th, 2025 at 10:17am MDT