

## \$1,899,000 - 55325 Rr222, Rural Sturgeon County

MLS® #E4432279

**\$1,899,000**

2 Bedroom, 3.50 Bathroom, 6,179 sqft

Rural on 55.00 Acres

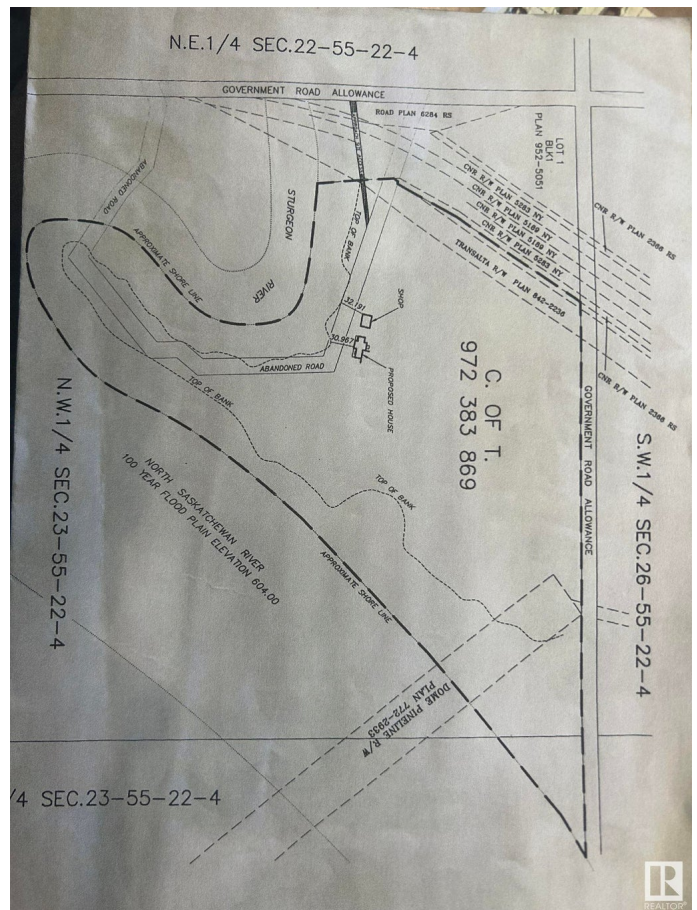
None, Rural Sturgeon County, AB

Private and Secluded this property is on 55 acres of land overlooking two rivers. The log home is absolutely stunning with slate flooring, stained glass doors, wet bar with purple heart wood throughout, sun room and absolutely stunning views from every window. The home is 6100+ sqft above grade and has a fully finished walk out basement. There is a ped way that connects the house to a 2000 sqft shop which is heated and insulated with 2 overhead doors. There is also a triple attached garage which is heated and insulated. Vaulted ceilings and an open concept make every room you walk into take your breath away. Tastefully decorated with incredible craftsmanship this home is in a category of its own.

Built in 1999

### Essential Information

MLS® #	E4432279
Price	\$1,899,000
Bedrooms	2
Bathrooms	3.50
Full Baths	3
Half Baths	1
Square Footage	6,179
Acres	55.00



Year Built	1999
Type	Rural
Sub-Type	Detached Single Family
Style	2 Storey
Status	Active

### Community Information

Address	55325 Rr222
Area	Rural Sturgeon County
Subdivision	None
City	Rural Sturgeon County
County	ALBERTA
Province	AB
Postal Code	T8K 2N9

### Amenities

Features	Bar, Carbon Monoxide Detectors, Deck, Detectors Smoke, Parking-Extra, Walkout Basement, Workshop
----------	--

### Interior

Interior Features	ensuite bathroom
Heating	In Floor Heat System, See Remarks, Natural Gas
Stories	3
Has Basement	Yes
Basement	Full, Finished

### Exterior

Exterior	Log
Exterior Features	Hillside, Landscaped, No Back Lane, Park/Reserve, Private Setting, Ravine View, River Valley View, River View, Rolling Land, Treed Lot
Construction	Log
Foundation	Concrete Perimeter

### Additional Information

Date Listed	April 23rd, 2025
Days on Market	7
Zoning	Zone 60

DATA IS DEEMED RELIABLE BUT IS NOT GUARANTEED ACCURATE BY THE REALTORS® ASSOCIATION OF EDMONTON. COPYRIGHT 2025 BY THE REALTORS® ASSOCIATION OF EDMONTON. ALL RIGHTS RESERVED. Trademarks are owned or controlled by the Canadian Real Estate Association (CREA) and identify real

estate professionals who are members of CREA (REALTOR®®, REALTORS®®) and/or the quality of services they provide (MLS®®, Multiple Listing Service®®)

Listing information last updated on April 30th, 2025 at 7:02pm MDT