

\$724,900 - 16264 Township 600, Rural Smoky Lake County

MLS® #E4432229

\$724,900

4 Bedroom, 3.50 Bathroom, 2,098 sqft

Rural on 135.10 Acres

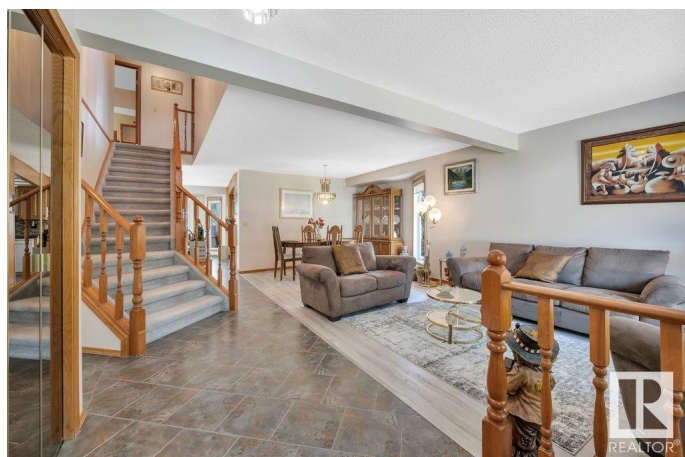
None, Rural Smoky Lake County, AB

This custom 2,100 sqft two-storey sits on 135 private acres only minutes from Smoky Lake and Mons Lake. The main floor offers a bright living room, formal dining, an oak-cabinet kitchen with new counters, a breakfast nook that opens to a sun-soaked solarium and deck, a family room with fireplace, a 2-pc bath, and main-floor laundry. Upstairs, the roomy primary suite includes a walk-in closet and 4-pc ensuite, joined by two more bedrooms and a second 4-pc bath. The walk-out basement is made for gatherings with a huge rec room, fireplace, wet bar, hot-tub area, a fourth bedroom, 3-pc bath, and storage. Outside, landscaped grounds feature multi-level decks, a fire-pit circle, and garden plot. A double attached garage plus a heated 44'x30' shop handle vehicles and projects. Rolling terrain invites hiking, quadding, or hobby farming—an ideal country retreat close to town and the lake.

Built in 1988

Essential Information

MLS® #	E4432229
Price	\$724,900
Bedrooms	4
Bathrooms	3.50



Full Baths	3
Half Baths	1
Square Footage	2,098
Acres	135.10
Year Built	1988
Type	Rural
Sub-Type	Detached Single Family
Style	2 Storey
Status	Active

Community Information

Address	16264 Township 600
Area	Rural Smoky Lake County
Subdivision	None
City	Rural Smoky Lake County
County	ALBERTA
Province	AB
Postal Code	T0A 3C0

Amenities

Features	Deck, Fire Pit, Hot Tub, R.V. Storage, Walkout Basement
----------	---

Interior

Interior Features	ensuite bathroom
Heating	Forced Air-1, Natural Gas
Stories	3
Has Basement	Yes
Basement	Full, Finished

Exterior

Exterior	Wood
Exterior Features	Backs Onto Park/Trees, Creek, Fenced, Hillside, Rolling Land, Vegetable Garden
Construction	Wood
Foundation	Concrete Perimeter

Additional Information

Date Listed	April 23rd, 2025
Days on Market	103

Zoning

Zone 60

DATA IS DEEMED RELIABLE BUT IS NOT GUARANTEED ACCURATE BY THE REALTORS® ASSOCIATION OF EDMONTON. COPYRIGHT 2025 BY THE REALTORS® ASSOCIATION OF EDMONTON. ALL RIGHTS RESERVED. Trademarks are owned or controlled by the Canadian Real Estate Association (CREA) and identify real estate professionals who are members of CREA (REALTOR®, REALTORS®) and/or the quality of services they provide (MLS®, Multiple Listing Service®)

Listing information last updated on August 4th, 2025 at 9:31am MDT