

## \$140,000 - 156 10 Street, Rural Parkland County

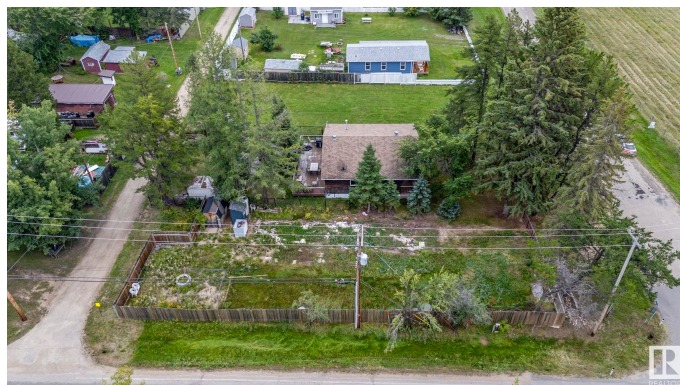
MLS® #E4430218

**\$140,000**

0 Bedroom, 0.00 Bathroom,  
Rural on 0.39 Acres

Seba Beach, Rural Parkland County, AB

Welcome to 156 10 street! This delightful corner lot is nestled in the heart of Seba Beach, just steps away from the serene shores of Lake Wabamun. Whether you're looking to build your perfect vacation retreat or your forever home, this lot offers the ideal blend of tranquility and convenience. This over 5200 sq ft. lot already has all of the necessities including: a drilled well, power, water, natural gas and sewer. You can easily move a mobile home to this property & have the comfort of having all utilities already set up. The property is completely fenced, and gated. It also includes a large shed for storage at the back of the property. Enjoy the friendly atmosphere of a tight-knit beach town with local shops, cafes, and recreational activities nearby. This lot provides access to the private Seba Beach dock, where residents of the Summer Village of Seba Beach can access the water. Priced to sell, this is your chance to claim a piece of paradise in a prime location.



### Essential Information

MLS® #	E4430218
Price	\$140,000
Bathrooms	0.00
Acres	0.39
Type	Rural

Sub-Type	Vacant Lot/Land
Status	Active

### Community Information

Address	156 10 Street
Area	Rural Parkland County
Subdivision	Seba Beach
City	Rural Parkland County
County	ALBERTA
Province	AB
Postal Code	T0E 2B0

### Exterior

Exterior Features	Back Lane, Beach Access, Boating, Corner Lot, Fenced, Fruit Trees/Shrubs, Golf Nearby, Lake Access Property, Lake View, Playground Nearby, Private Fishing, Private Setting, Recreation Use, Shopping Nearby
-------------------	--------------------------------------------------------------------------------------------------------------------------------------------------------------------------------------------------------------

### Additional Information

Date Listed	April 10th, 2025
Days on Market	24
Zoning	Zone 93

DATA IS DEEMED RELIABLE BUT IS NOT GUARANTEED ACCURATE BY THE REALTORS® ASSOCIATION OF EDMONTON. COPYRIGHT 2025 BY THE REALTORS® ASSOCIATION OF EDMONTON. ALL RIGHTS RESERVED. Trademarks are owned or controlled by the Canadian Real Estate Association (CREA) and identify real estate professionals who are members of CREA (REALTOR®, REALTORS®) and/or the quality of services they provide (MLS®, Multiple Listing Service®)

Listing information last updated on May 4th, 2025 at 1:47am MDT