

\$180,000 - 1 54114 Rge Rd 52, Rural Lac Ste. Anne County

MLS® #E4430033

\$180,000

2 Bedroom, 1.00 Bathroom, 727 sqft

Rural on 0.15 Acres

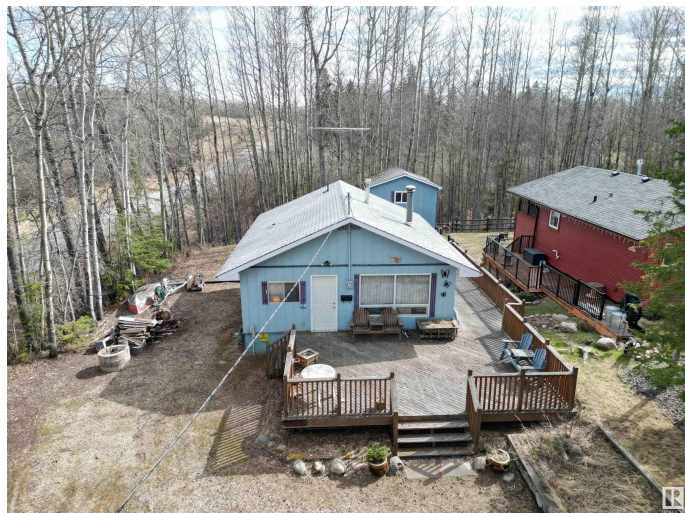
Bay Bridge Estates, Rural Lac Ste. Anne County, AB

Located in Bay Bridge Estates, this well-kept 2-bed, 1-bath cabin is the perfect 3-season retreat. Built in 1978 and still owned by the original builder, it sits on a private, treed corner lot just steps from the lake. Enjoy a spacious cedar deck, ample parking, and a peaceful setting ideal for summer getaways. This property comes fully furnished, and includes a small boat, trailer, and motor—everything you need to start making memories right away. A detached workshop with an upper-level bunkhouse offers extra space for guests or storage, plus there's a rear crawl space for added convenience. Whether you're looking to relax or explore the lake, this turn-key cabin is ready for its next chapter of summer adventures.

Built in 1978

Essential Information

MLS® #	E4430033
Price	\$180,000
Bedrooms	2
Bathrooms	1.00
Full Baths	1
Square Footage	727



Acres	0.15
Year Built	1978
Type	Rural
Sub-Type	Detached Single Family
Style	Bungalow
Status	Active

Community Information

Address	1 54114 Rge Rd 52
Area	Rural Lac Ste. Anne County
Subdivision	Bay Bridge Estates
City	Rural Lac Ste. Anne County
County	ALBERTA
Province	AB
Postal Code	T0E 1H0

Amenities

Features	Crawl Space, Front Porch
----------	--------------------------

Interior

Heating	Forced Air-1, Natural Gas
Fireplace	Yes
Stories	1
Has Basement	Yes
Basement	None, No Basement

Exterior

Exterior	Wood
Exterior Features	Corner Lot, Landscaped, Treed Lot
Construction	Wood
Foundation	Piling

Additional Information

Date Listed	April 10th, 2025
Days on Market	99
Zoning	Zone 75

DATA IS DEEMED RELIABLE BUT IS NOT GUARANTEED ACCURATE BY THE REALTORS® ASSOCIATION OF EDMONTON. COPYRIGHT 2025 BY THE REALTORS® ASSOCIATION OF EDMONTON. ALL RIGHTS RESERVED. Trademarks are owned or controlled by the Canadian Real Estate Association (CREA) and identify real estate professionals who are members of CREA (REALTOR®, REALTORS®) and/or the quality of services they

provide (MLS®®, Multiple Listing Service®®)
Listing information last updated on July 18th, 2025 at 6:02am MDT