

\$69,900 - Range Road 112 Township Road 624, Rural St. Paul County

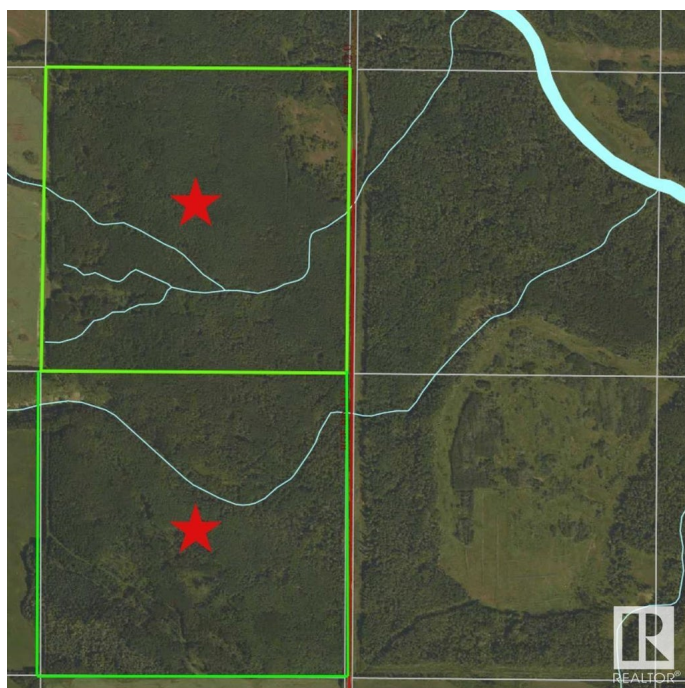
MLS® #E4428804

\$69,900

0 Bedroom, 0.00 Bathroom,
Rural on 318.00 Acres

Mcrae, Rural St. Paul County, AB

Looking to expand your grazing potential in Northeastern Alberta? These two quarter sections, each located on separate Grazing Lease (GRL) parcels, offer a promising opportunity for those looking to add valuable summer pasture to their cattle operation. With newly developed road allowances, access has been significantly improved, making it easier to reach and manage the land. While fencing will need to be installed, the groundwork is ready for those willing to invest some sweat equity. Whether you're building your herd or securing land for future generations, this property offers the chance to create a lasting legacy in Alberta's ranch country. Wide open spaces, and the promise of seasons to come—this could be the beginning of your next chapter on the range.



Essential Information

MLS® #	E4428804
Price	\$69,900
Bathrooms	0.00
Acres	318.00
Type	Rural
Sub-Type	Vacant Lot/Land
Status	Active

Community Information

Address	Range Road 112 Township Road 624
Area	Rural St. Paul County
Subdivision	Mcrae
City	Rural St. Paul County
County	ALBERTA
Province	AB
Postal Code	T0A 2Z0

Exterior

Exterior Features Fenced

Additional Information

Date Listed	April 2nd, 2025
Days on Market	77
Zoning	Zone 60

DATA IS DEEMED RELIABLE BUT IS NOT GUARANTEED ACCURATE BY THE REALTORS® ASSOCIATION OF EDMONTON. COPYRIGHT 2025 BY THE REALTORS® ASSOCIATION OF EDMONTON. ALL RIGHTS RESERVED. Trademarks are owned or controlled by the Canadian Real Estate Association (CREA) and identify real estate professionals who are members of CREA (REALTOR®, REALTORS®) and/or the quality of services they provide (MLS®, Multiple Listing Service®)

Listing information last updated on June 18th, 2025 at 1:17pm MDT